



DIVISION OF FAMILY RESOURCES

Statewide Monthly Management Report September 2023

State of Indiana

Eric Holcomb
Governor

Family and Social Services Administration

Dan Rusyniak, MD
Secretary

Division of Family Resources

Adrienne Shields
Director

For questions regarding data on this report contact:
office.Communications@fssa.IN.gov



State of Indiana

Published October 2023



DIVISION OF FAMILY RESOURCES

Monthly Management Report

Reporting Month: September 2023

Location: Statewide

TEMPORARY ASSISTANCE FOR NEEDY FAMILIES (TANF)

Child-Only and One-Parent Families	September 2023	August 2023	September 2022	Annual Change
Number of families receiving TANF Grants	4,351	4,236	3,779	15.14%
Total number of grant recipients	9,148	8,856	7,462	22.59%
Number of adult grant recipients	1,398	1,279	723	93.36%
Number of child grant recipients	7,750	7,577	6,739	15.00%
Total payments	\$892,259	\$852,789	\$731,060	22.05%
Average payment per case	\$205.07	\$201.32	\$193.45	6.00%
Average payment per recipient	\$97.54	\$96.30	\$97.97	-0.44%
Number of cases with benefits reduced to zero	118	114	94	25.53%
Number of recipients with benefits reduced to zero	218	223	174	25.29%
Number of adult recipients with benefit reduced to zero	23	28	25	-8.00%
Number of child recipients with benefit reduced to zero	195	195	149	30.87%

Two-Parent Families	September 2023	August 2023	September 2022	Annual Change
Number of families receiving TANF Grants	905	883	340	166.18%
Total number of grant recipients	3,290	3,253	1,202	173.71%
Number of adult grant recipients	1,802	1,759	471	282.59%
Number of child grant recipients	1,488	1,494	731	103.56%
Total payments	\$284,801	\$279,239	\$100,045	184.67%
Average payment per case	\$314.70	\$316.24	\$294.25	6.95%
Average payment per recipient	\$86.57	\$85.84	\$83.23	4.01%
Number of cases with benefits reduced to zero	7	7	0	0%
Number of recipients with benefits reduced to zero	27	27	0	0%
Number of adult recipients with benefit reduced to zero	14	14	0	0%
Number of child recipients with benefit reduced to zero	13	13	0	0%

Note:

For August 2021, a one time payment of \$400 per recipient was included in the Total payments and Average payments. TANF section rules changed to reflect Federal reporting logic effective September 2021.
 For August 2022, a one-time payment of \$269 per recipient was included in the Total payments and Average payments.

Source:



DIVISION OF FAMILY RESOURCES

Monthly Management Report

Reporting Month: September 2023

Location: Statewide

TANF - APPLICATIONS

	September 2023	August 2023	September 2022	Annual Change
Number of Applications	7,779	8,731	4,051	92.03%



DIVISION OF FAMILY RESOURCES

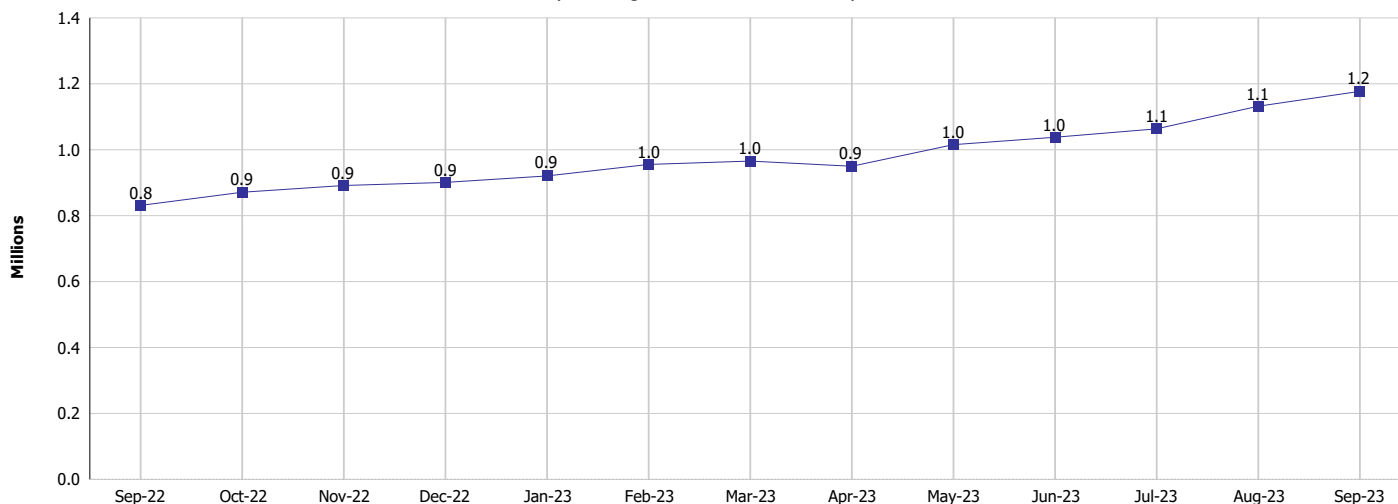
Monthly Management Report

Reporting Month: September 2023

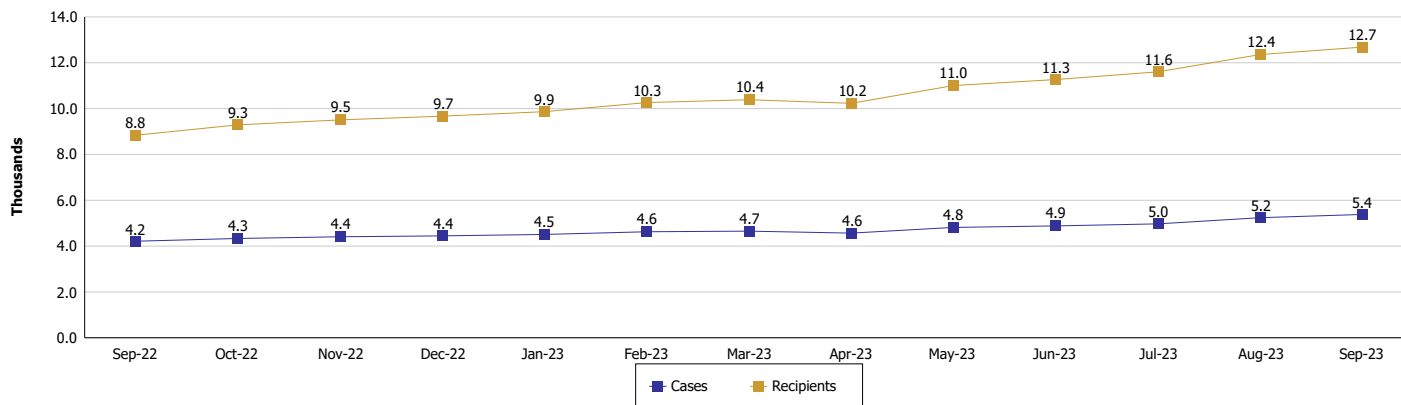
Location: Statewide

TEMPORARY ASSISTANCE FOR NEEDY FAMILIES (TANF)

TANF Cash Assistance (TANF Regular and TANF Two-Parent)



TANF Cases and Recipients (TANF Regular and TANF Two-Parent)



Note:

For August 2021, a one time payment of \$400 per recipient was included in the Total payments and Average payments. TANF section rules changed to reflect Federal reporting logic effective September 2021. For August 2022, a one-time payment of \$269 per recipient was included in the Total payments and Average payments.



DIVISION OF FAMILY RESOURCES

Monthly Management Report

Reporting Month: September 2023

Location: Statewide

SUPPLEMENTAL NUTRITION ASSISTANCE PROGRAM (SNAP)

	September 2023	August 2023	September 2022	Annual Change
Total issuance	\$116,684,606	\$117,866,856	\$100,508,566	16.09%
Number of households receiving SNAP benefits	287,723	288,578	284,992	0.96%
Number of recipients	602,946	605,214	601,841	0.18%
Average issuance per household	\$405.54	\$408.44	\$352.67	14.99%
Average issuance per recipient	\$193.52	\$194.75	\$167.00	15.88%
Number of Applications	43,635	49,242	23,122	88.72%



DIVISION OF FAMILY RESOURCES

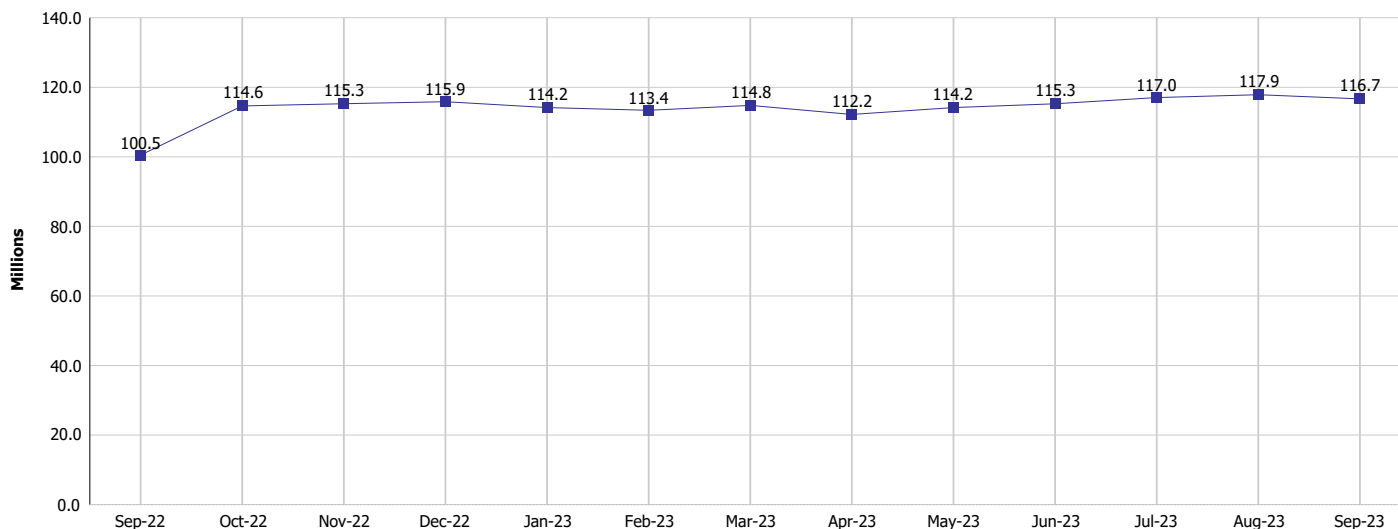
Monthly Management Report

Reporting Month: September 2023

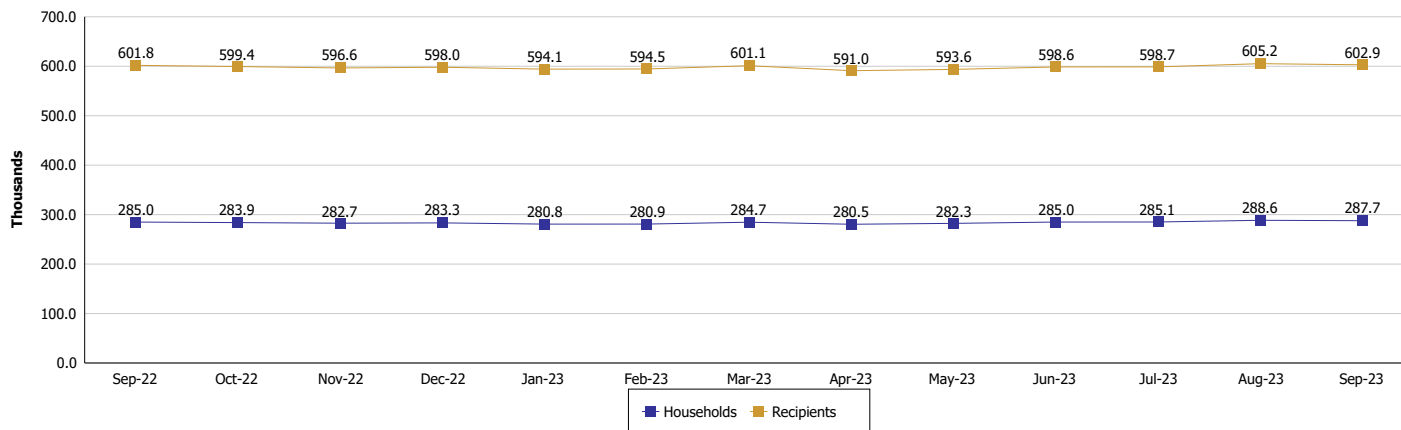
Location: Statewide

SUPPLEMENTAL NUTRITION ASSISTANCE PROGRAM (SNAP)

SNAP Issuance



SNAP Households and Recipients



Note:

Run Date: Oct 13, 2023



DIVISION OF FAMILY RESOURCES

Monthly Management Report

Reporting Month: September 2023

Location: Statewide

HIP 2.0 and SNAP

	September 2023	August 2023	September 2022	Annual Change
Total HIP 2.0 Members	802,300	813,214	811,850	-1.18%
HIP Members also SNAP Recipients	180,728	181,232	183,023	-1.25%
Percentage HIP Members SNAP Recipients	22.5%	22.3%	22.5%	-0.02
HIP Members SNAP ABAWDs	9,945	10,531	11,672	-14.80%
Percentage HIP Members SNAP ABAWDs	1.2%	1.3%	1.4%	-0.2



DIVISION OF FAMILY RESOURCES

Monthly Management Report

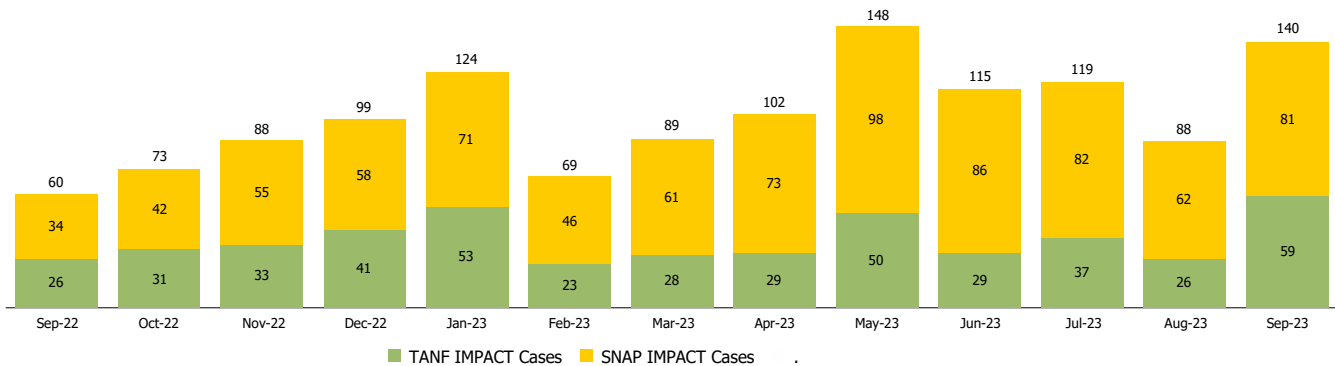
Reporting Month: September 2023

Location: Statewide

INDIANA MANPOWER PLACEMENT AND COMPREHENSIVE TRAINING (IMPACT)

	September 2023	August 2023	September 2022	Annual Change
Number of IMPACT cases	140	88	60	133.33%
Number of TANF IMPACT adults	59	26	26	126.92%
Number of SNAP IMPACT Cases	81	62	34	138.24%
Total number of adults employed	2,912	2,856	3,373	-13.67%
Number of TANF IMPACT adults newly employed (within past 30 days)	64	55	37	72.97%
Number of SNAP IMPACT adults employed	2,848	2,801	3,336	-14.63%
Total number of adults ineligible due to employment	2,082	1,683	1,636	27.26%
Number of TANF adults ineligible due to employment	32	31	27	18.52%
Number of SNAP adults ineligible due to employment	2,050	1,652	1,609	27.41%

IMPACT Caseloads
(SNAP, TANF, Total Caseload)



Note:

Effective January 2022, these numbers have been adjusted to reflect only those actually participating in IMPACT.