



## DIVISION OF FAMILY RESOURCES

# Monthly Management Report April 2012

**State of Indiana**  
Mitchell E. Daniels, Jr.  
Governor

**Family and Social Services  
Administration**  
Michael Gargano  
Secretary

**Division of Family  
Resources**  
Mike Carr  
Interim Director

For questions regarding data on this report contact:  
[office.Communications@fssa.IN.gov](mailto:office.Communications@fssa.IN.gov)



## State of Indiana

Published May 2012



## DIVISION OF FAMILY RESOURCES

### Monthly Management Report

Reporting Month: April 2012

Location: Statewide

#### TEMPORARY ASSISTANCE FOR NEEDY FAMILIES (TANF)

<b>Child-Only and One-Parent Families</b>	<b>April 2012</b>	<b>March 2012</b>	<b>April 2011</b>	<b>Annual Change</b>
Number of families receiving TANF Grants	15,098	15,663	23,487	-35.72%
Total number of grant recipients	35,432	36,955	58,068	-38.98%
Number of adult grant recipients	8,097	8,597	16,188	-49.98%
Number of child grant recipients	27,335	28,358	41,880	-34.73%
Total payments	\$2,775,933	\$2,897,730	\$4,806,525	-42.25%
Average payment per case	\$183.86	\$185.00	\$204.65	-10.16%
Average payment per recipient	\$78.35	\$78.41	\$82.77	-5.35%
Number of cases with benefits reduced to zero	699	679	1,998	-65.02%
Number of recipients with benefits reduced to zero	1,628	1,579	5,485	-70.32%
Number of adult recipients with benefit reduced to zero	478	460	1,780	-73.15%
Number of child recipients with benefit reduced to zero	1,150	1,119	3,705	-68.96%

<b>Two-Parent Families</b>	<b>April 2012</b>	<b>March 2012</b>	<b>April 2011</b>	<b>Annual Change</b>
Number of families receiving TANF Grants	1,135	1,160	2,623	-56.73%
Total number of grant recipients	4,654	4,720	10,478	-55.58%
Number of adult grant recipients	1,833	1,866	4,586	-60.03%
Number of child grant recipients	2,821	2,854	5,892	-52.12%
Total payments	\$242,529	\$248,617	\$690,661	-64.88%
Average payment per case	\$213.68	\$214.32	\$263.31	-18.85%
Average payment per recipient	\$52.11	\$52.67	\$65.92	-20.94%
Number of cases with benefits reduced to zero	50	50	337	-85.16%
Number of recipients with benefits reduced to zero	200	192	1,413	-85.85%
Number of adult recipients with benefit reduced to zero	82	76	630	-86.98%
Number of child recipients with benefit reduced to zero	118	116	783	-84.93%



## DIVISION OF FAMILY RESOURCES

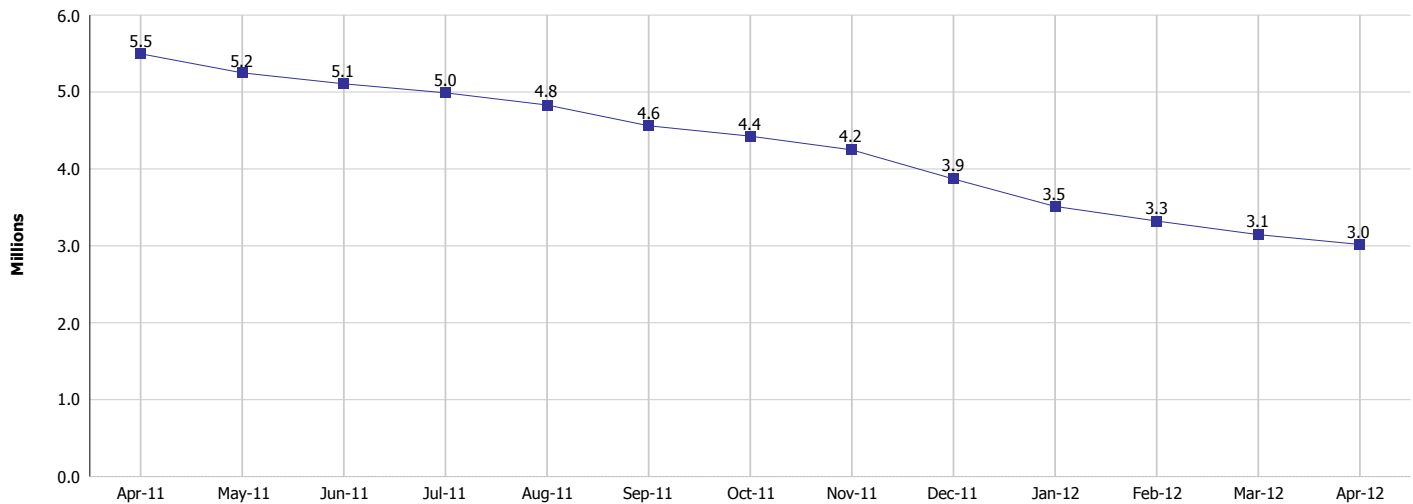
### Monthly Management Report

Reporting Month: April 2012

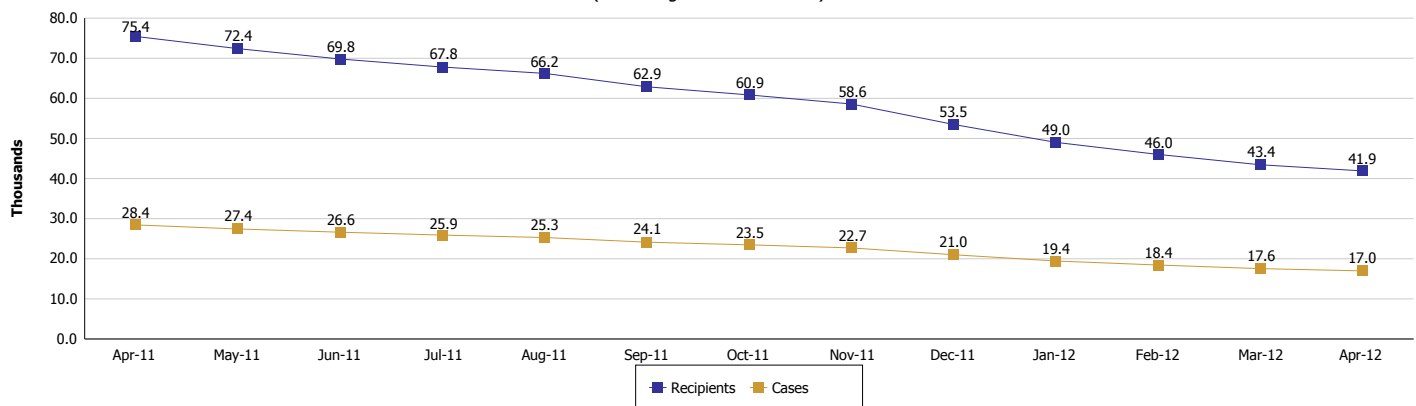
Location: Statewide

#### TEMPORARY ASSISTANCE FOR NEEDY FAMILIES (TANF)

**TANF Cash Assistance**  
(TANF Regular and TANF UP)



**TANF Cases and Recipients**  
(TANF Regular and TANF UP)





## DIVISION OF FAMILY RESOURCES

### Monthly Management Report

Reporting Month: April 2012

Location: Statewide

#### SUPPLEMENTAL NUTRITION ASSISTANCE PROGRAM (SNAP)

	April 2012	March 2012	April 2011	Annual Change
Total issuance	\$118,708,029	\$119,129,622	\$115,601,205	2.69%
Number of households receiving SNAP benefits	398,291	400,183	381,162	4.49%
Number of recipients	901,315	906,899	876,169	2.87%
Average issuance per household	\$298.04	\$297.69	\$303.29	-1.73%
Average issuance per recipient	\$131.71	\$131.36	\$131.94	-0.18%

#### SNAP ERROR RATES

	December 2011	November 2011	October 2011	Cumulative FFY 2010
FFY Cumulative Positive Error Rate	4.58%	4.63%	4.22%	2.48%
Monthly Positive Error Rate	4.47%	5.03%	4.22%	NA
FFY Cumulative Negative Error Rate	1.10%	1.59%	1.54%	2.69%
Monthly Negative Error Rate	0.00%	1.64%	1.54%	NA

#### Notes:

Reporting periods for SNAP Error Rates reflect the review period and Federal submission deadline. The month reported above is the month in which an action was taken included in the review sample.

Positive actions are those which produced an issuance of benefits to a household. Negative actions are those which closed or denied benefits to a household.

Error Rate data is reported by the state before the federal agency has accepted and finalized the results. This rate is subject to revision. Monthly numbers are taken from the end of the month totals. Error status of cases may be changed by either State or Federal Review process, which would cause a change that might not be reflected in the previous monthly numbers.



# DIVISION OF FAMILY RESOURCES

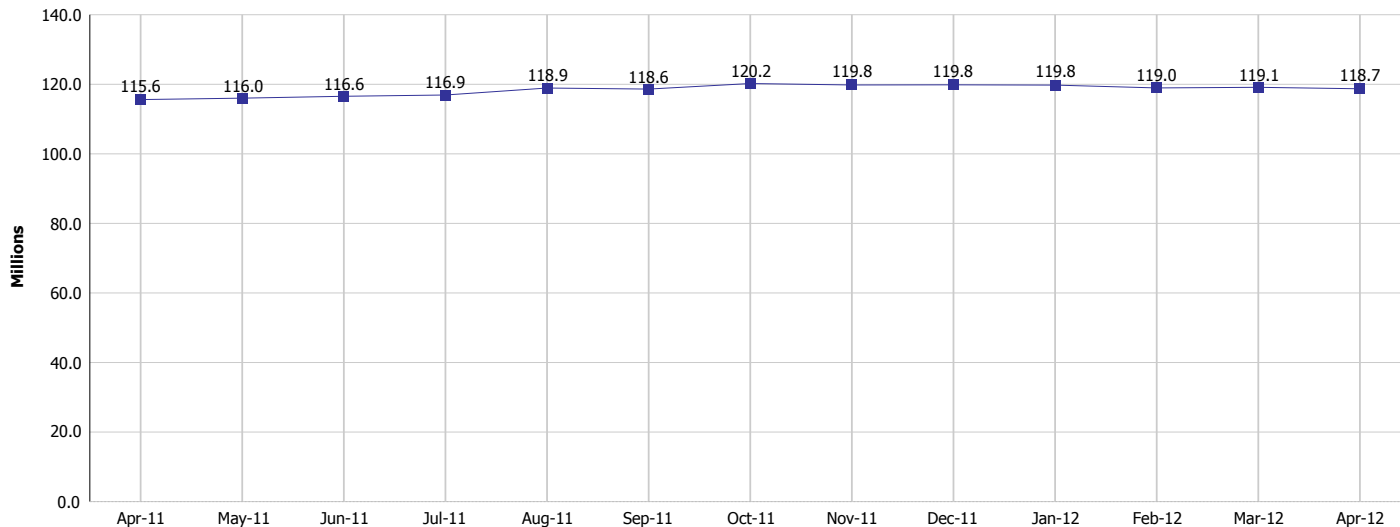
## Monthly Management Report

Reporting Month: April 2012

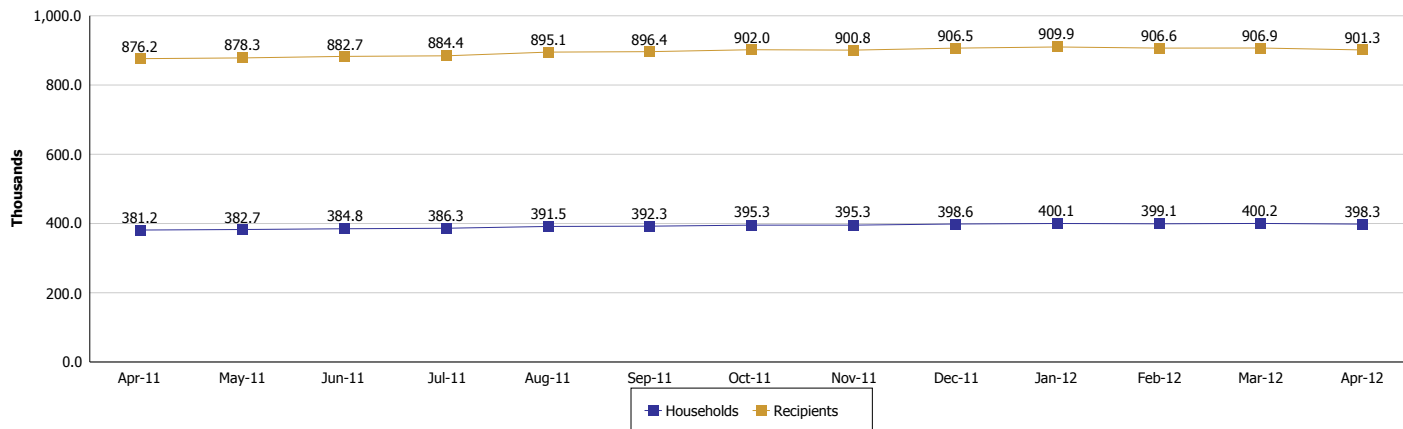
Location: Statewide

### SUPPLEMENTAL NUTRITION ASSISTANCE PROGRAM (SNAP)

#### SNAP Issuance



#### SNAP Households and Recipients





## DIVISION OF FAMILY RESOURCES

### Monthly Management Report

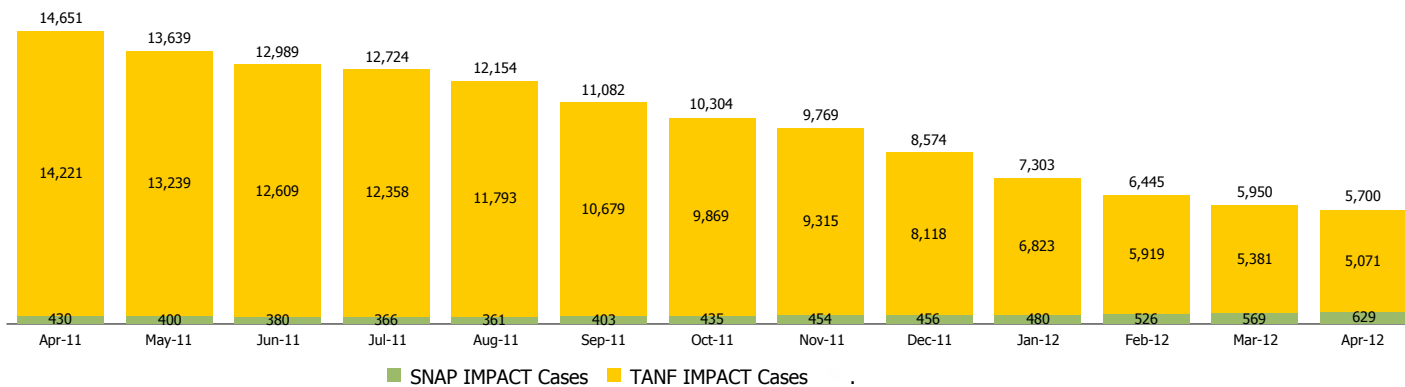
Reporting Month: April 2012

Location: Statewide

#### INDIANA MANPOWER PLACEMENT AND COMPREHENSIVE TRAINING (IMPACT)

	April 2012	March 2012	April 2011	Annual Change
Number of IMPACT cases	5,700	5,950	14,651	-61.09%
Number of TANF IMPACT Cases	5,071	5,381	14,221	-64.34%
Number of SNAP IMPACT Cases	629	569	430	46.28%
Total number of adults employed	411	418	1,031	-60.14%
Number of TANF IMPACT adults employed	348	358	962	-63.83%
Number of SNAP IMPACT adults employed	63	60	69	-8.70%
Total number of adults ineligible due to employment	1,621	1,750	1,674	-3.17%
Number of TANF adults ineligible due to employment	27	38	93	-70.97%
Number of SNAP adults ineligible due to employment	1,594	1,712	1,581	0.82%

**IMPACT Caseloads**  
(SNAP, TANF, Total Caseload)



**Notes:**

The methodology used for counting the number of TANF IMPACT cases changed in June 2010 to show all individuals referred to IMPACT for services.

Beginning with May 2010 the SNAP IMPACT program became a voluntary program. This change resulted in a substantial reduction in the number of IMPACT cases.



## DIVISION OF FAMILY RESOURCES

### Monthly Management Report

Reporting Month: April 2012

Location: Statewide

#### CHILD CARE

	April 2012	March 2012	April 2011	Annual Change
Total Subsidized Child Care Payments	\$12,689,075	\$12,644,784	\$11,255,926	12.73%
Total Number of CCDF Children	34,079	34,202	31,467	8.30%
Total Number of licensed Child Care Homes	2,875	2,887	2,978	-3.46%
Licensed Capacity of Child Care Homes	36,111	36,197	37,234	-3.02%
Total Number of Licensed CC Centers	602	603	609	-1.15%
Licensed Capacity of CC Centers	65,268	65,369	65,895	-0.95%
Total Number of Registered Ministries (Capacity not Regulated)	722	724	736	-1.90%