



## DIVISION OF FAMILY RESOURCES

# Monthly Management Report August 2018

### State of Indiana

Eric Holcomb  
Governor

### Family and Social Services Administration

Jennifer Walthall, M.D.  
Secretary

### Division of Family Resources

Adrienne Shields  
Director

For questions regarding data on this report contact:  
[office.Communications@fssa.IN.gov](mailto:office.Communications@fssa.IN.gov)



## State of Indiana

Published September 2018



## DIVISION OF FAMILY RESOURCES

### Monthly Management Report

Reporting Month: August 2018

Location: Statewide

#### TEMPORARY ASSISTANCE FOR NEEDY FAMILIES (TANF)

| Child-Only and One-Parent Families                      | Aug 31, 2018 | July 2018   | August 2017 | Annual Change |
|---|--------------|-------------|-------------|---------------|
| Number of families receiving TANF Grants                | 5,879        | 5,893       | 6,689       | -12.11%       |
| Total number of grant recipients                        | 12,318       | 12,288      | 13,880      | -11.25%       |
| Number of adult grant recipients                        | 1,707        | 1,691       | 1,949       | -12.42%       |
| Number of child grant recipients                        | 10,611       | 10,597      | 11,931      | -11.06%       |
| Total payments  | \$1,147,398  | \$1,138,353 | \$1,282,384 | -10.53%       |
| Average payment per case                                | \$195.17     | \$193.17    | \$191.72    | 1.80%         |
| Average payment per recipient                           | \$93.15      | \$92.64     | \$92.39     | 0.82%         |
| Number of cases with benefits reduced to zero           | 83           | 84          | 105         | -20.95%       |
| Number of recipients with benefits reduced to zero      | 179          | 188         | 213         | -15.96%       |
| Number of adult recipients with benefit reduced to zero | 44           | 44          | 50          | -12.00%       |
| Number of child recipients with benefit reduced to zero | 135          | 144         | 163         | -17.18%       |

| Two-Parent Families                                     | Aug 31, 2018 | July 2018 | August 2017 | Annual Change |
|---|--------------|-----------|-------------|---------------|
| Number of families receiving TANF Grants                | 230          | 230       | 333         | -30.93%       |
| Total number of grant recipients                        | 891          | 890       | 1,373       | -35.11%       |
| Number of adult grant recipients                        | 310          | 307       | 498         | -37.75%       |
| Number of child grant recipients                        | 581          | 583       | 875         | -33.60%       |
| Total payments  | \$48,370     | \$47,787  | \$73,761    | -34.42%       |
| Average payment per case                                | \$210.30     | \$207.77  | \$221.50    | -5.06%        |
| Average payment per recipient                           | \$54.29      | \$53.69   | \$53.72     | 1.05%         |
| Number of cases with benefits reduced to zero           | 5            | 6         | 4           | 25.00%        |
| Number of recipients with benefits reduced to zero      | 18           | 21        | 16          | 12.50%        |
| Number of adult recipients with benefit reduced to zero | 7            | 8         | 6           | 16.67%        |
| Number of child recipients with benefit reduced to zero | 11           | 13        | 10          | 10.00%        |

**Note:**

All data July 2014 and following will be broken out according to the new DFR region structure effective July 1 2014.

Source:



## DIVISION OF FAMILY RESOURCES

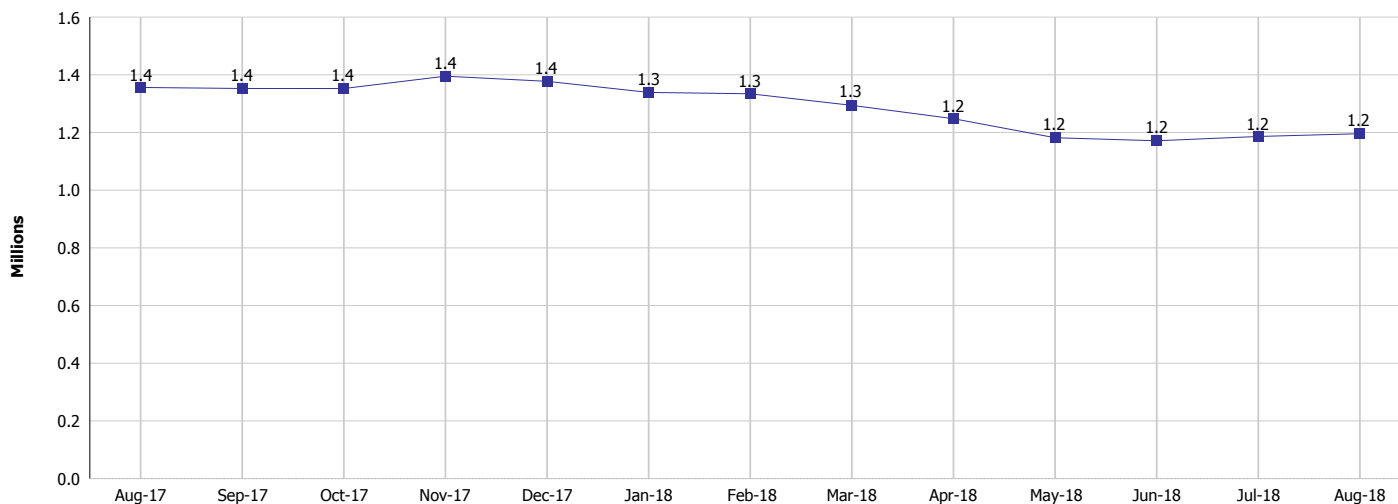
### Monthly Management Report

Reporting Month: August 2018

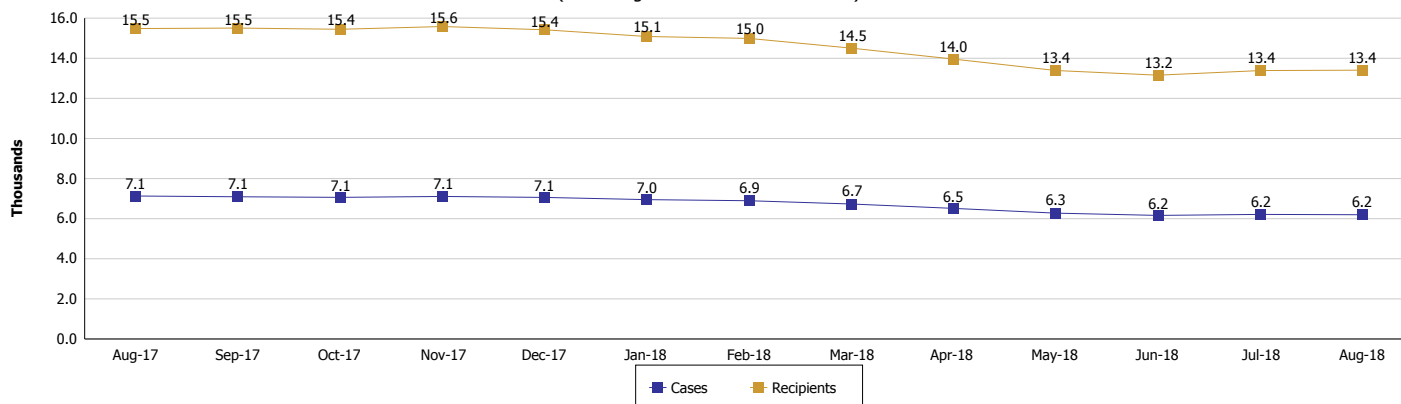
Location: Statewide

#### TEMPORARY ASSISTANCE FOR NEEDY FAMILIES (TANF)

**TANF Cash Assistance**  
(TANF Regular and TANF Two-Parent)



**TANF Cases and Recipients**  
(TANF Regular and TANF Two-Parent)



**Note:**

All data July 2014 and following will be broken out according to the new DFR region structure effective July 1 2014.

**Monthly Management Report**

Reporting Month: August 2018 Location: Statewide

**SUPPLEMENTAL NUTRITION ASSISTANCE PROGRAM (SNAP)**

|  | August 2018  | July 2018    | August 2017  | Annual Change |
|--|--------------|--------------|--------------|---------------|
| Total issuance                               | \$72,153,331 | \$71,387,921 | \$78,680,630 | -8.30%        |
| Number of households receiving SNAP benefits | 271,644      | 269,045      | 290,219      | -6.40%        |
| Number of recipients                         | 606,194      | 601,227      | 654,122      | -7.33%        |
| Average issuance per household               | \$265.62     | \$265.34     | \$271.11     | -2.03%        |
| Average issuance per recipient               | \$119.03     | \$118.74     | \$120.28     | -1.05%        |

**Note:**  
All data July 2014 and following will be broken out according to the new DFR region structure effective July 1 2014.

**SNAP ERROR RATES**

|                                    | April 2018 | March 2018 | February 2018 | Cumulative FFY 2017 |
|------------------------------------|------------|------------|---------------|---------------------|
| FFY Cumulative Positive Error Rate | 5.13%      | 4.89%      | 5.51%         | 9.19%               |
| Monthly Positive Error Rate        | 6.46%      | 1.37%      | 4.69%         | NA                  |
| FFY Cumulative Negative Error Rate | 42.65%     | 43.02%     | 44.07%        | 30.52%              |
| Monthly Negative Error Rate        | 40.35%     | 37.50%     | 49.15%        | NA                  |

**Note:**  
All data July 2014 and following will be broken out according to the new DFR region structure effective July 1 2014.

**Notes:**  
Reporting periods for SNAP Error Rates reflect the review period and Federal submission deadline. The month reported above is the month in which an action was taken included in the review sample.  
Positive actions are those which produced an issuance of benefits to a household. Negative actions are those which closed or denied benefits to a household.  
Error Rate data is reported by the state before the federal agency has accepted and finalized the results. This rate is subject to revision based upon: completion and submission of outstanding reviews; final review corrections; and completion of previously dropped reviews. Monthly numbers are taken from end-of-month totals. The error status of cases may be changed by the State or Federal Review process, which would cause a change that might not be reflected in the previous monthly numbers.



# DIVISION OF FAMILY RESOURCES

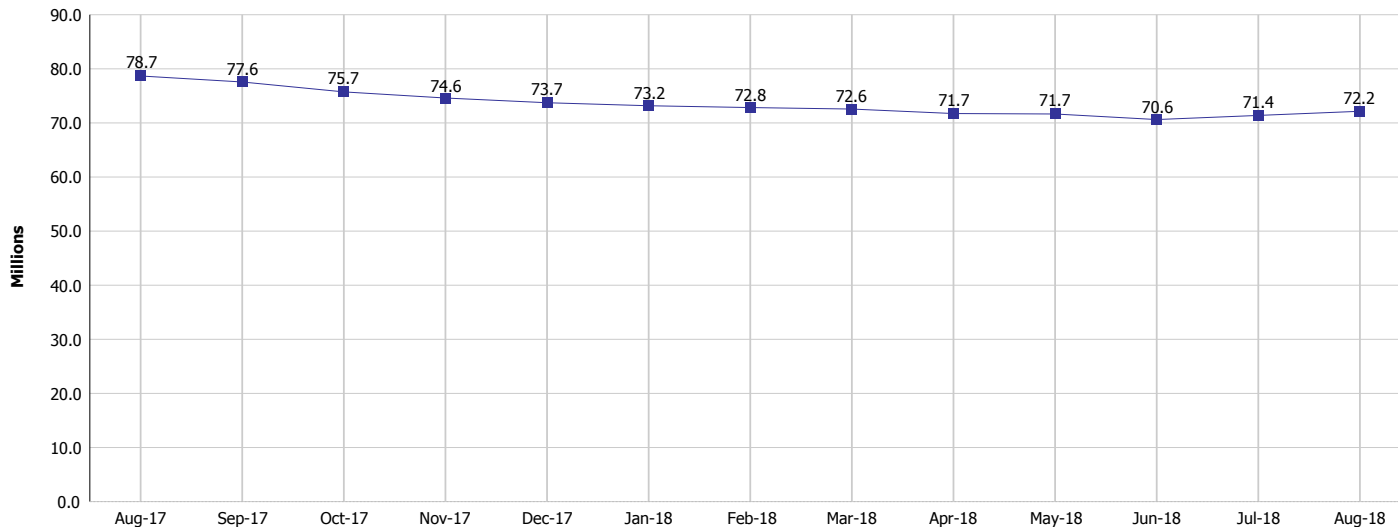
## Monthly Management Report

Reporting Month: August 2018

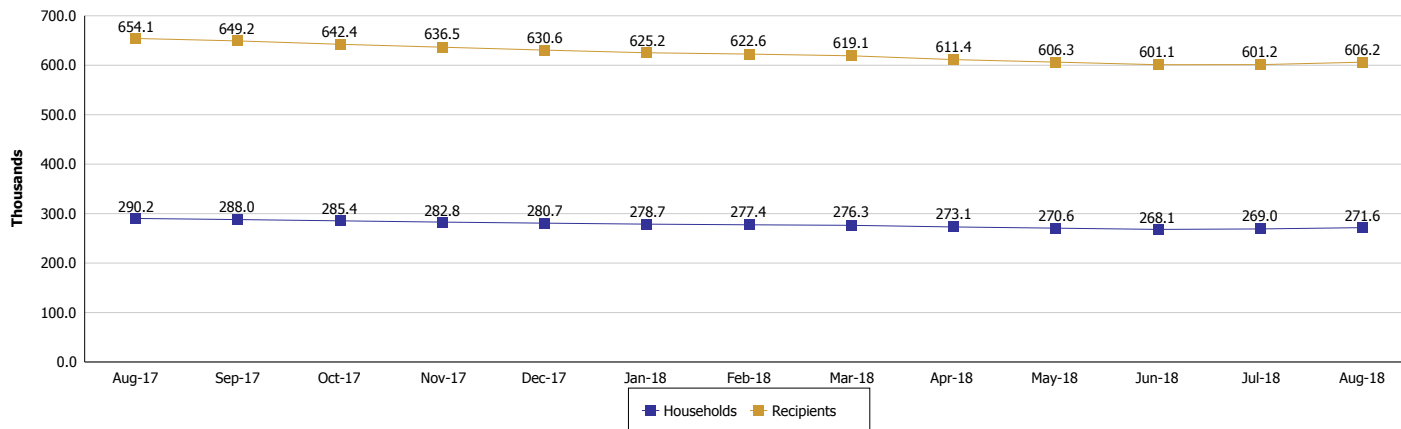
Location: Statewide

### SUPPLEMENTAL NUTRITION ASSISTANCE PROGRAM (SNAP)

#### SNAP Issuance



#### SNAP Households and Recipients



**Note:**

All data July 2014 and following will be broken out according to the new DFR region structure effective July 1 2014.



## DIVISION OF FAMILY RESOURCES

### Monthly Management Report

Reporting Month: August 2018

Location: Statewide

#### HIP 2.0 and SNAP

|  | August 2018 | July 2018 | August 2017 | Annual Change |
|--|-------------|-----------|-------------|---------------|
| Total HIP 2.0 Members                  | 422,915     | 426,512   | 446,482     | -5.28%        |
| HIP Members also SNAP Recipients       | 144,462     | 144,728   | 153,640     | -5.97%        |
| Percentage HIP Members SNAP Recipients | 34.2%       | 33.9%     | 34.4%       | -5.04%        |
| HIP Members SNAP ABAWDs                | 6,754       | 6,089     | 4,463       | 51.33%        |
| Percentage HIP Members SNAP ABAWDs     | 1.6%        | 1.4%      | 1.0%        | -5.04%        |

**Note:**

All data July 2014 and following will be broken out according to the new DFR region structure effective July 1 2014.



## DIVISION OF FAMILY RESOURCES

### Monthly Management Report

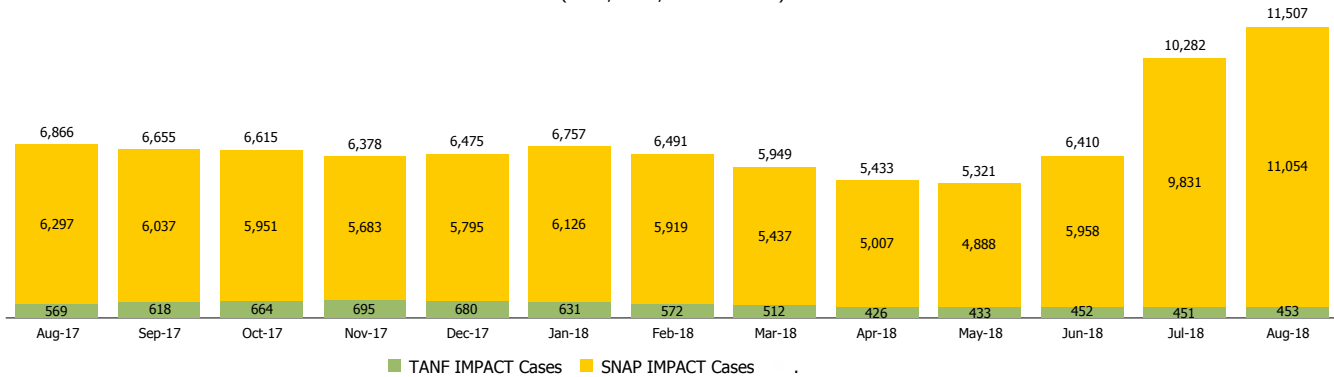
Reporting Month: August 2018

Location: Statewide

#### INDIANA MANPOWER PLACEMENT AND COMPREHENSIVE TRAINING (IMPACT)

|   | August 2018 | July 2018 | August 2017 | Annual Change |
|---|-------------|-----------|-------------|---------------|
| Number of IMPACT cases  | 11,507      | 10,282    | 6,866       | 67.59%        |
| Number of TANF IMPACT adults                                      | 453         | 451       | 569         | -20.39%       |
| Number of SNAP IMPACT Cases                                       | 11,054      | 9,831     | 6,297       | 75.54%        |
| Total number of adults employed                                   | 1,747       | 1,331     | 1,666       | 4.86%         |
| Number of TANF IMPACT adults newly employed (within past 30 days) | 123         | 93        | 119         | 3.36%         |
| Number of SNAP IMPACT adults employed                             | 1,624       | 1,238     | 1,547       | 4.98%         |
| Total number of adults ineligible due to employment               | 3,956       | 4,544     | 5,312       | -25.53%       |
| Number of TANF adults ineligible due to employment                | 14          | 11        | 9           | 55.56%        |
| Number of SNAP adults ineligible due to employment                | 3,942       | 4,533     | 5,303       | -25.66%       |

**IMPACT Caseloads**  
(SNAP, TANF, Total Caseload)



**Note:**

All data July 2014 and following will be broken out according to the new DFR region structure effective July 1 2014.