



DIVISION OF FAMILY RESOURCES

Monthly Management Report December 2012

State of Indiana
Mitchell E. Daniels, Jr.
Governor

**Family and Social Services
Administration**
Michael Gargano
Secretary

**Division of Family
Resources**
Mike Carr
Interim Director

For questions regarding data on this report contact:
office.Communications@fssa.IN.gov



State of Indiana

Published January 2013



DIVISION OF FAMILY RESOURCES

Monthly Management Report

Reporting Month: December 2012

Location: Statewide

TEMPORARY ASSISTANCE FOR NEEDY FAMILIES (TANF)

Child-Only and One-Parent Families	December 2012	November 2012	December 2011	Annual Change
Number of families receiving TANF Grants	12,886	13,237	18,602	-30.73%
Total number of grant recipients	29,187	30,274	45,155	-35.36%
Number of adult grant recipients	6,039	6,392	11,317	-46.64%
Number of child grant recipients	23,148	23,882	33,838	-31.59%
Total payments	\$2,376,484	\$2,460,252	\$3,545,258	-32.97%
Average payment per case	\$184.42	\$185.86	\$190.58	-3.23%
Average payment per recipient	\$81.42	\$81.27	\$78.51	3.71%
Number of cases with benefits reduced to zero	615	609	880	-30.11%
Number of recipients with benefits reduced to zero	1,429	1,378	2,194	-34.87%
Number of adult recipients with benefit reduced to zero	399	383	663	-39.82%
Number of child recipients with benefit reduced to zero	1,030	995	1,531	-32.72%

Two-Parent Families	December 2012	November 2012	December 2011	Annual Change
Number of families receiving TANF Grants	901	925	1,444	-37.60%
Total number of grant recipients	3,629	3,722	5,819	-37.64%
Number of adult grant recipients	1,426	1,461	2,374	-39.93%
Number of child grant recipients	2,203	2,261	3,445	-36.05%
Total payments	\$194,550	\$198,402	\$324,959	-40.13%
Average payment per case	\$215.93	\$214.49	\$225.04	-4.05%
Average payment per recipient	\$53.61	\$53.31	\$55.84	-4.00%
Number of cases with benefits reduced to zero	37	43	86	-56.98%
Number of recipients with benefits reduced to zero	145	173	327	-55.66%
Number of adult recipients with benefit reduced to zero	54	67	139	-61.15%
Number of child recipients with benefit reduced to zero	91	106	188	-51.60%



DIVISION OF FAMILY RESOURCES

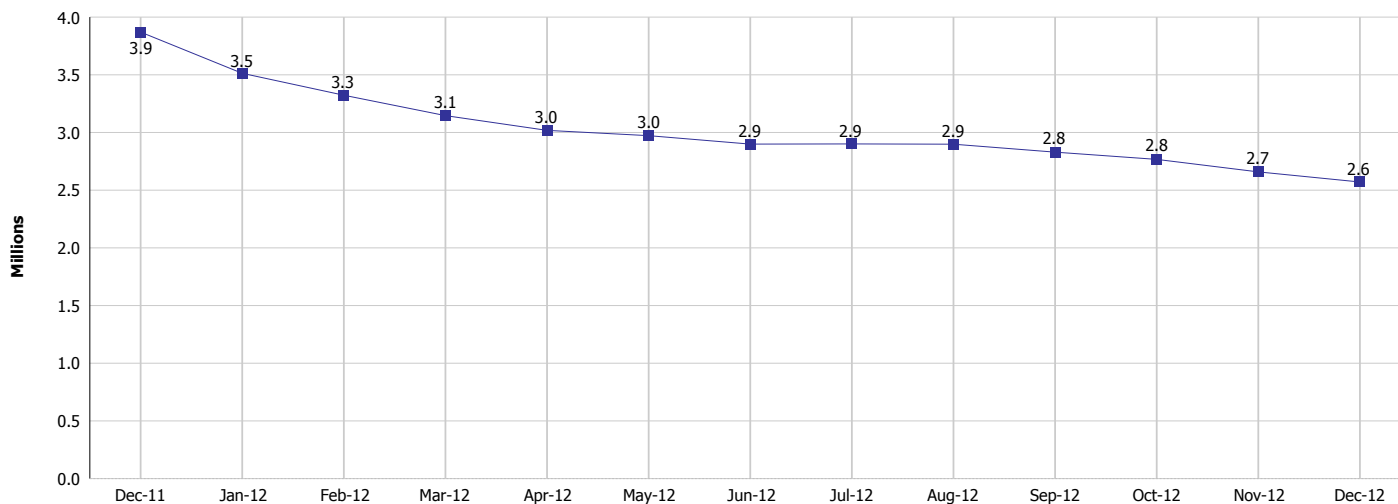
Monthly Management Report

Reporting Month: December 2012

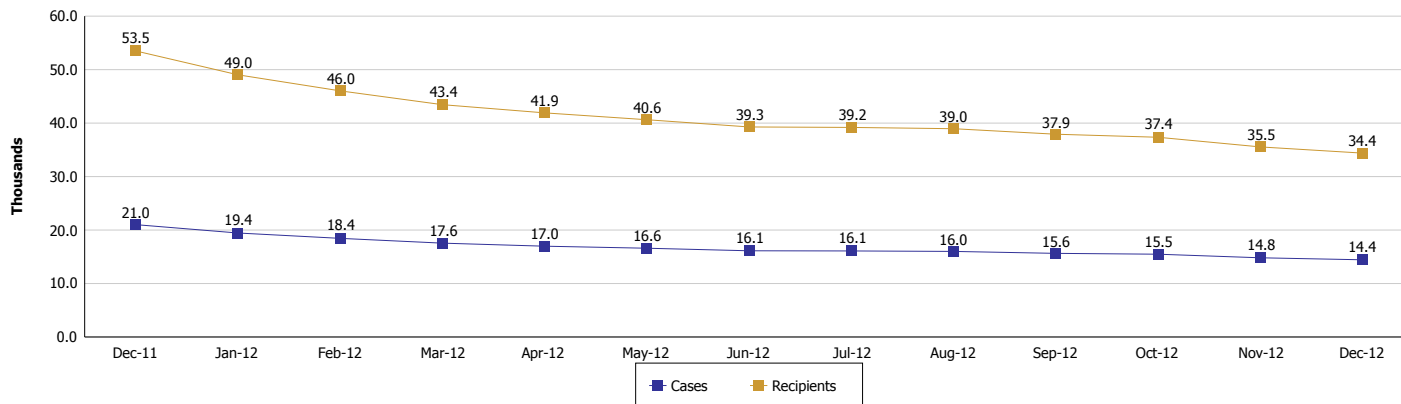
Location: Statewide

TEMPORARY ASSISTANCE FOR NEEDY FAMILIES (TANF)

TANF Cash Assistance
(TANF Regular and TANF UP)



TANF Cases and Recipients
(TANF Regular and TANF UP)





DIVISION OF FAMILY RESOURCES

Monthly Management Report

Reporting Month: December 2012

Location: Statewide

SUPPLEMENTAL NUTRITION ASSISTANCE PROGRAM (SNAP)

	December 2012	November 2012	December 2011	Annual Change
Total issuance	\$121,915,958	\$121,727,384	\$119,842,103	1.73%
Number of households receiving SNAP benefits	412,681	411,805	398,566	3.54%
Number of recipients	923,808	922,650	906,520	1.91%
Average issuance per household	\$295.42	\$295.59	\$300.68	-1.75%
Average issuance per recipient	\$131.97	\$131.93	\$132.20	-0.17%

SNAP ERROR RATES

	August 2012	July 2012	June 2012	Cumulative FFY 2010
FFY Cumulative Positive Error Rate	4.79%	4.97%	5.01%	2.48%
Monthly Positive Error Rate	3.16%	4.63%	7.42%	NA
FFY Cumulative Negative Error Rate	1.17%	1.31%	1.29%	2.69%
Monthly Negative Error Rate	0.00%	1.47%	1.79%	NA

Notes:

Reporting periods for SNAP Error Rates reflect the review period and Federal submission deadline. The month reported above is the month in which an action was taken included in the review sample.

Positive actions are those which produced an issuance of benefits to a household. Negative actions are those which closed or denied benefits to a household.

Error Rate data is reported by the state before the federal agency has accepted and finalized the results. This rate is subject to revision. Monthly numbers are taken from the end of the month totals. Error status of cases may be changed by either State or Federal Review process, which would cause a change that might not be reflected in the previous monthly numbers.



DIVISION OF FAMILY RESOURCES

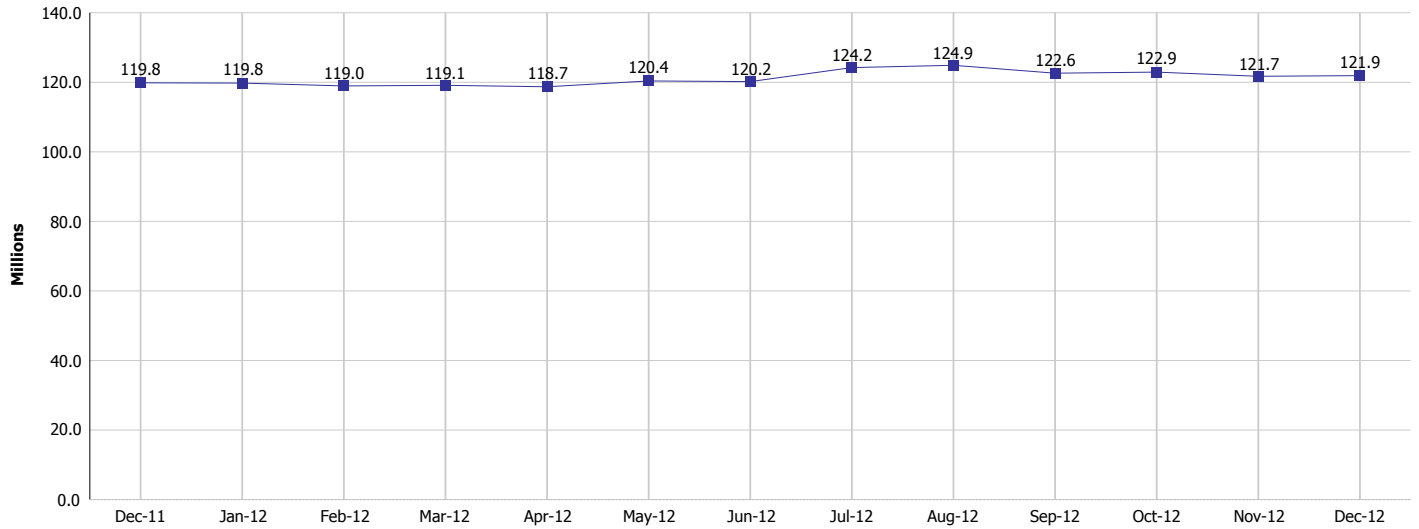
Monthly Management Report

Reporting Month: December 2012

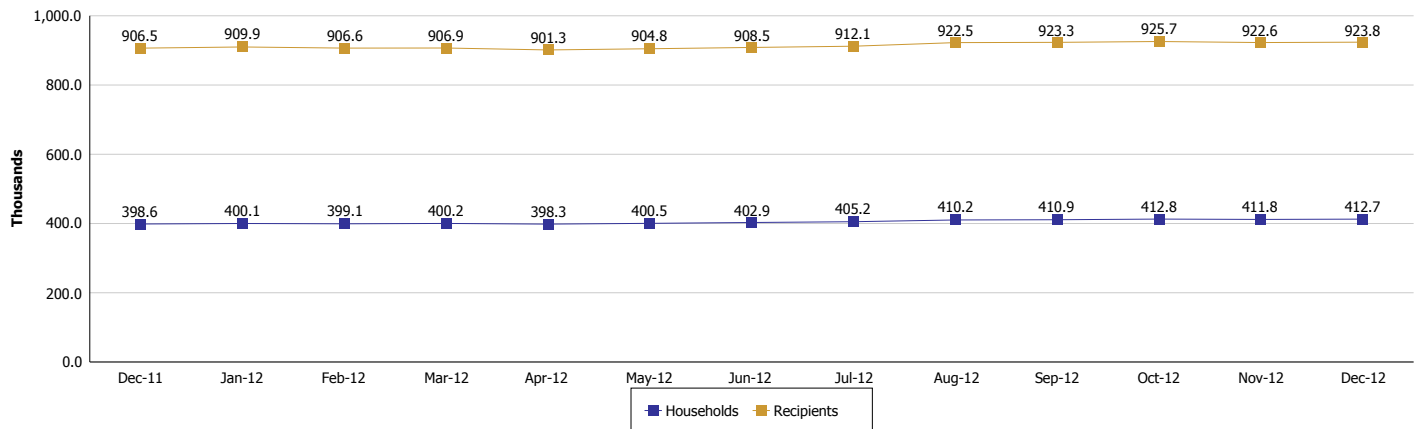
Location: Statewide

SUPPLEMENTAL NUTRITION ASSISTANCE PROGRAM (SNAP)

SNAP Issuance



SNAP Households and Recipients





DIVISION OF FAMILY RESOURCES

Monthly Management Report

Reporting Month: December 2012

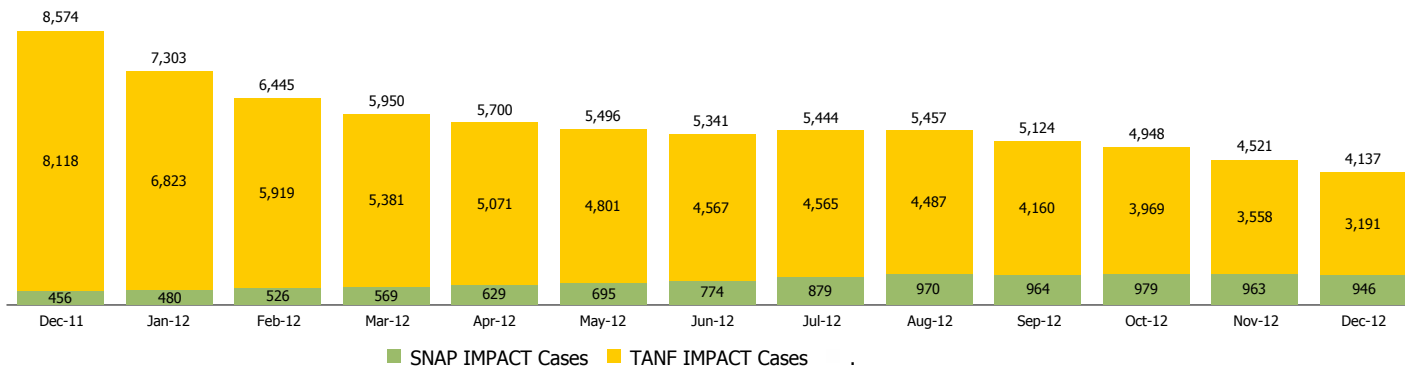
Location: Statewide

INDIANA MANPOWER PLACEMENT AND COMPREHENSIVE TRAINING (IMPACT)

	December 2012	November 2012	December 2011	Annual Change
Number of IMPACT cases	4,137	4,521	8,574	-51.75%
Number of TANF IMPACT Cases	3,191	3,558	8,118	-60.69%
Number of SNAP IMPACT Cases	946	963	456	107.46%
Total number of adults employed	262	370	539	-51.39%
Number of TANF IMPACT adults employed	209	298	491	-57.43%
Number of SNAP IMPACT adults employed	53	72	48	10.42%
Total number of adults ineligible due to employment	1,898	2,170	1,928	-1.56%
Number of TANF adults ineligible due to employment	24	40	48	-50.00%
Number of SNAP adults ineligible due to employment	1,874	2,130	1,880	-0.32%

IMPACT Caseloads

(SNAP, TANF, Total Caseload)



Notes:

The methodology used for counting the number of TANF IMPACT cases changed in June 2010 to show all individuals referred to IMPACT for services.

Beginning with May 2010 the SNAP IMPACT program became a voluntary program. This change resulted in a substantial reduction in the number of IMPACT cases.



DIVISION OF FAMILY RESOURCES

Monthly Management Report

Reporting Month: December 2012

Location: Statewide

CHILD CARE

	December 2012	November 2012	December 2011	Annual Change
Total Subsidized Child Care Payments	\$12,813,437	\$13,035,800	\$11,545,076	10.99%
Total Number of CCDF Children	34,699	35,144	32,342	7.29%
Total Number of licensed Child Care Homes	2,854	2,841	2,919	-2.23%
Licensed Capacity of Child Care Homes	35,969	35,843	36,414	-1.22%
Total Number of Licensed CC Centers	594	597	601	-1.16%
Licensed Capacity of CC Centers	64,471	64,548	64,956	-0.75%
Total Number of Registered Ministries (Capacity not Regulated)	700	706	736	-4.89%