



## DIVISION OF FAMILY RESOURCES

# Monthly Management Report January 2019

### State of Indiana

Eric Holcomb  
Governor

### Family and Social Services Administration

Jennifer Walthall, M.D.  
Secretary

### Division of Family Resources

Adrienne Shields  
Director

For questions regarding data on this report contact:  
[office.Communications@fssa.IN.gov](mailto:office.Communications@fssa.IN.gov)



## State of Indiana

Published February 2019



## DIVISION OF FAMILY RESOURCES

### Monthly Management Report

Reporting Month: January 2019

Location: Statewide

#### TEMPORARY ASSISTANCE FOR NEEDY FAMILIES (TANF)

Child-Only and One-Parent Families	Jan 31, 2019	December 2018	January 2018	Annual Change
Number of families receiving TANF Grants	5,588	5,781	6,550	-14.69%
Total number of grant recipients	11,550	12,065	13,722	-15.83%
Number of adult grant recipients	1,572	1,687	2,020	-22.18%
Number of child grant recipients	9,978	10,378	11,702	-14.73%
Total payments	\$1,089,935	\$1,133,263	\$1,282,317	-15.00%
Average payment per case	\$195.05	\$196.03	\$195.77	-0.37%
Average payment per recipient	\$94.37	\$93.93	\$93.45	0.98%
Number of cases with benefits reduced to zero	72	70	109	-33.94%
Number of recipients with benefits reduced to zero	151	141	236	-36.02%
Number of adult recipients with benefit reduced to zero	33	33	60	-45.00%
Number of child recipients with benefit reduced to zero	118	108	176	-32.95%

Two-Parent Families	Jan 31, 2019	December 2018	January 2018	Annual Change
Number of families receiving TANF Grants	220	224	288	-23.61%
Total number of grant recipients	853	863	1,115	-23.50%
Number of adult grant recipients	300	302	401	-25.19%
Number of child grant recipients	553	561	714	-22.55%
Total payments	\$47,404	\$48,888	\$56,682	-16.37%
Average payment per case	\$215.47	\$218.25	\$196.81	9.48%
Average payment per recipient	\$55.57	\$56.65	\$50.84	9.32%
Number of cases with benefits reduced to zero	6	4	3	100.00%
Number of recipients with benefits reduced to zero	22	18	12	83.33%
Number of adult recipients with benefit reduced to zero	8	6	4	100.00%
Number of child recipients with benefit reduced to zero	14	12	8	75.00%

**Note:**

All data July 2014 and following will be broken out according to the new DFR region structure effective July 1 2014.

Source:



## DIVISION OF FAMILY RESOURCES

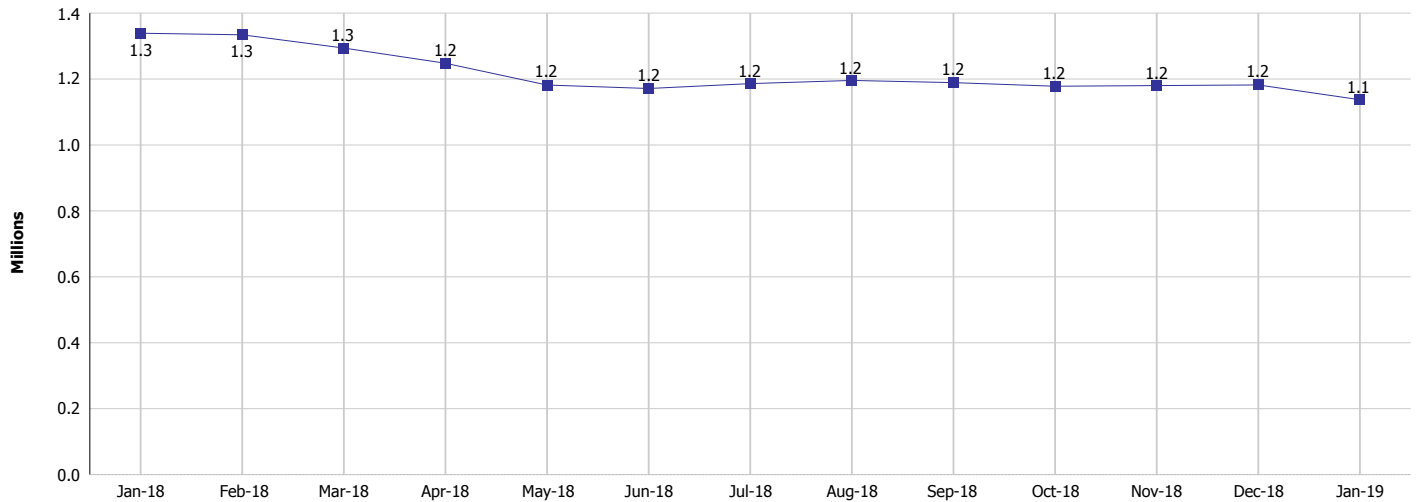
### Monthly Management Report

Reporting Month: January 2019

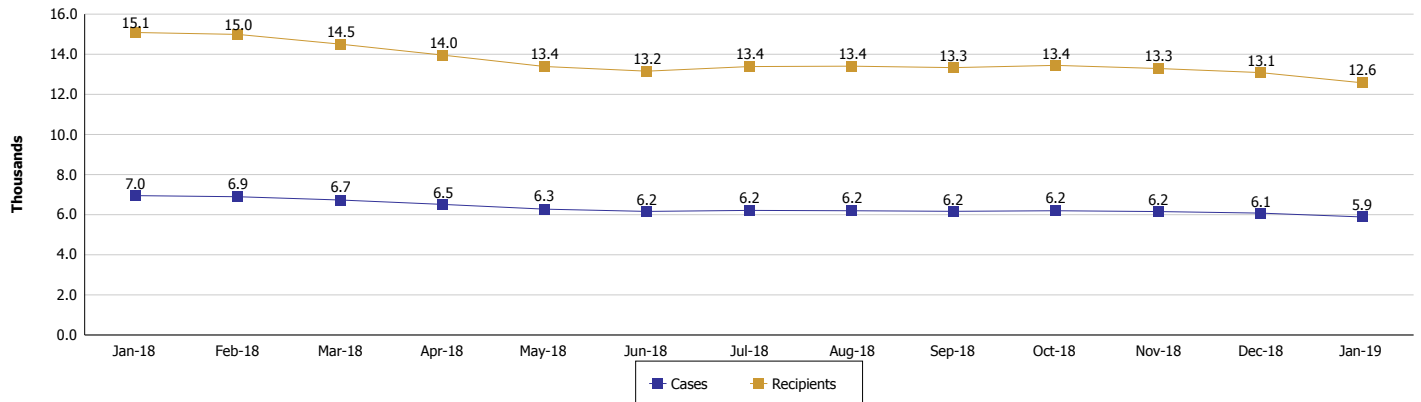
Location: Statewide

#### TEMPORARY ASSISTANCE FOR NEEDY FAMILIES (TANF)

**TANF Cash Assistance**  
(TANF Regular and TANF Two-Parent)



**TANF Cases and Recipients**  
(TANF Regular and TANF Two-Parent)



**Note:**

All data July 2014 and following will be broken out according to the new DFR region structure effective July 1 2014.

**Monthly Management Report**

Reporting Month: January 2019 Location: Statewide

**SUPPLEMENTAL NUTRITION ASSISTANCE PROGRAM (SNAP)**

	January 2019	December 2018	January 2018	Annual Change
Total issuance	\$68,936,280	\$68,935,862	\$73,178,861	-5.80%
Number of households receiving SNAP benefits	267,680	263,004	278,712	-3.96%
Number of recipients	596,971	584,699	625,207	-4.52%
Average issuance per household	\$257.53	\$262.11	\$262.56	-1.92%
Average issuance per recipient	\$115.48	\$117.90	\$117.05	-1.34%

**Note:**  
All data July 2014 and following will be broken out according to the new DFR region structure effective July 1 2014.

**SNAP ERROR RATES**

	September 2018	August 2018	July 2018	Cumulative FFY 2017
FFY Cumulative Positive Error Rate	6.10%	5.84%	5.70%	9.19%
Monthly Positive Error Rate	9.07%	7.21%	9.19%	NA
FFY Cumulative Negative Error Rate	39.94%	38.75%	39.62%	30.52%
Monthly Negative Error Rate	52.46%	30.65%	33.33%	NA

**Note:**  
All data July 2014 and following will be broken out according to the new DFR region structure effective July 1 2014.

**Notes:**  
Reporting periods for SNAP Error Rates reflect the review period and Federal submission deadline. The month reported above is the month in which an action was taken included in the review sample.  
Positive actions are those which produced an issuance of benefits to a household. Negative actions are those which closed or denied benefits to a household.  
Error Rate data is reported by the state before the federal agency has accepted and finalized the results. This rate is subject to revision based upon: completion and submission of outstanding reviews; final review corrections; and completion of previously dropped reviews. Monthly numbers are taken from end-of-month totals. The error status of cases may be changed by the State or Federal Review process, which would cause a change that might not be reflected in the previous monthly numbers.



# DIVISION OF FAMILY RESOURCES

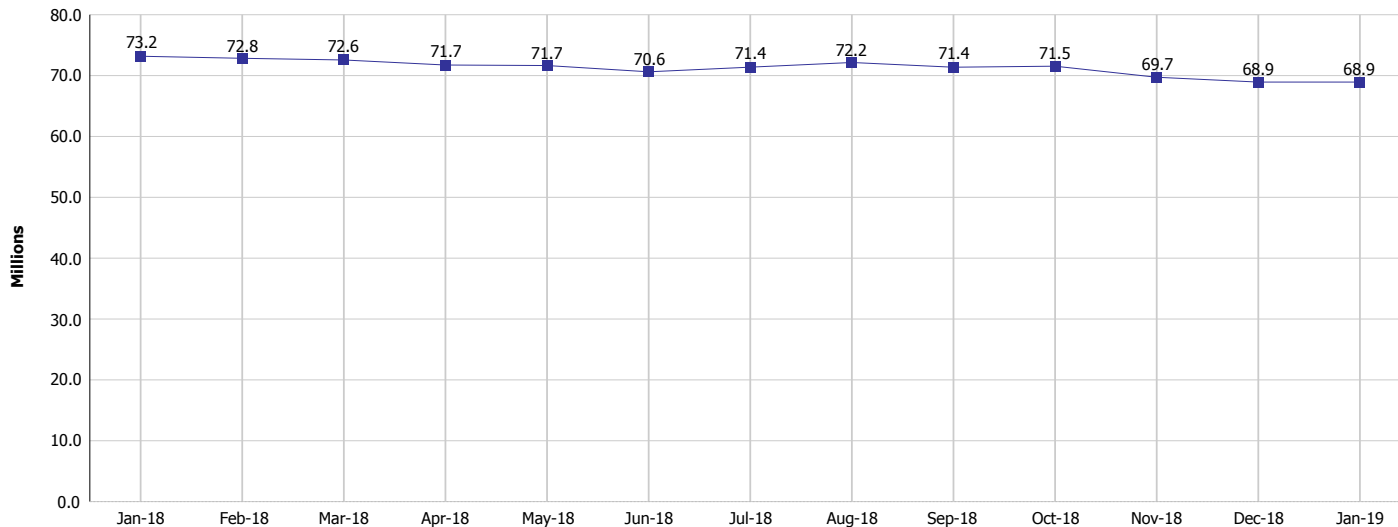
## Monthly Management Report

Reporting Month: January 2019

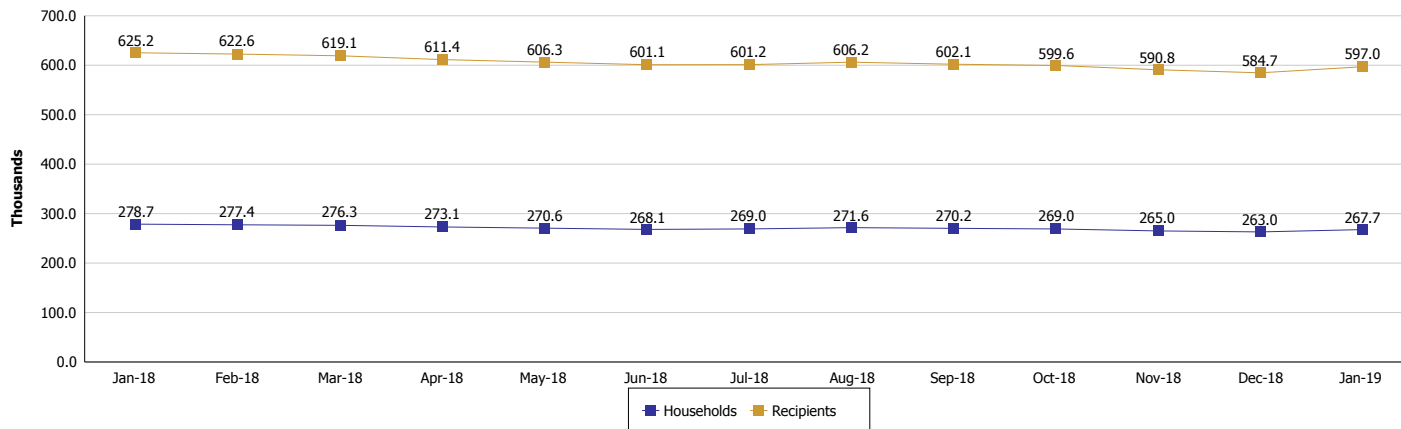
Location: Statewide

### SUPPLEMENTAL NUTRITION ASSISTANCE PROGRAM (SNAP)

#### SNAP Issuance



#### SNAP Households and Recipients



**Note:**

All data July 2014 and following will be broken out according to the new DFR region structure effective July 1 2014.



## DIVISION OF FAMILY RESOURCES

### Monthly Management Report

Reporting Month: January 2019

Location: Statewide

#### HIP 2.0 and SNAP

	January 2019	December 2018	January 2018	Annual Change
Total HIP 2.0 Members	420,370	424,087	446,709	-5.90%
HIP Members also SNAP Recipients	142,291	141,061	145,509	-2.21%
Percentage HIP Members SNAP Recipients	33.8%	33.3%	32.6%	-4.78%
HIP Members SNAP ABAWDs	5,068	4,961	3,991	26.99%
Percentage HIP Members SNAP ABAWDs	1.2%	1.2%	0.9%	-4.78%

**Note:**

All data July 2014 and following will be broken out according to the new DFR region structure effective July 1 2014.



## DIVISION OF FAMILY RESOURCES

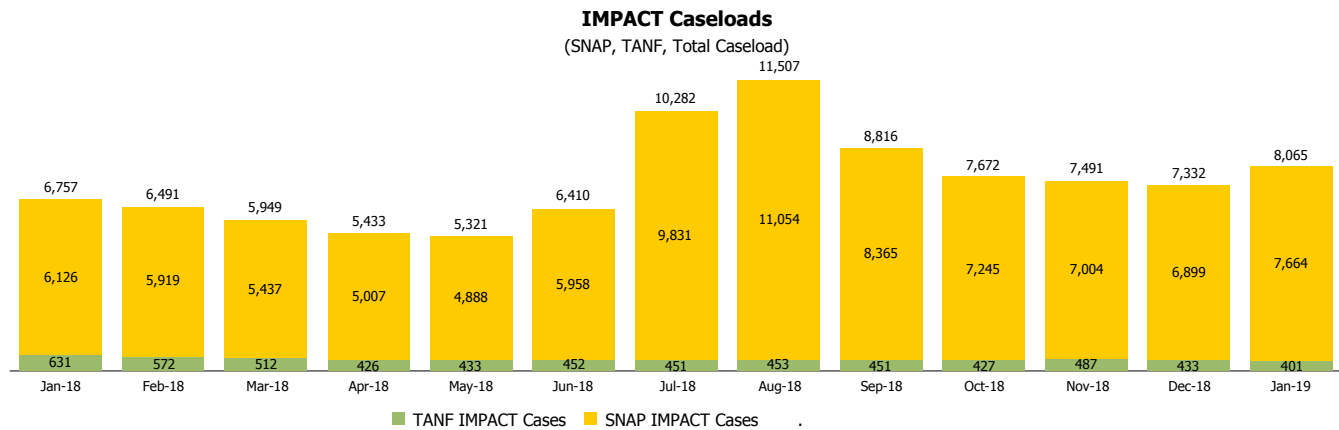
### Monthly Management Report

Reporting Month: January 2019

Location: Statewide

#### INDIANA MANPOWER PLACEMENT AND COMPREHENSIVE TRAINING (IMPACT)

	January 2019	December 2018	January 2018	Annual Change
Number of IMPACT cases	8,065	7,332	6,757	19.36%
Number of TANF IMPACT adults	401	433	631	-36.45%
Number of SNAP IMPACT Cases	7,664	6,899	6,126	25.11%
Total number of adults employed	1,199	997	984	21.85%
Number of TANF IMPACT adults newly employed (within past 30 days)	62	69	113	-45.13%
Number of SNAP IMPACT adults employed	1,137	928	871	30.54%
Total number of adults ineligible due to employment	5,403	5,816	5,159	4.73%
Number of TANF adults ineligible due to employment	21	10	16	31.25%
Number of SNAP adults ineligible due to employment	5,382	5,806	5,143	4.65%



**Note:**

All data July 2014 and following will be broken out according to the new DFR region structure effective July 1 2014.