



DIVISION OF FAMILY RESOURCES

Monthly Management Report July 2020

State of Indiana

Eric Holcomb
Governor

Family and Social Services Administration

Jennifer Sullivan, M.D.
Secretary

Division of Family Resources

Adrienne Shields
Director

For questions regarding data on this report contact:
office.Communications@fssa.IN.gov



State of Indiana

Published October 2020



DIVISION OF FAMILY RESOURCES

Monthly Management Report

Reporting Month: July 2020

Location: Statewide

TEMPORARY ASSISTANCE FOR NEEDY FAMILIES (TANF)

Child-Only and One-Parent Families	Jul 31, 2020	June 2020	July 2019	Annual Change
Number of families receiving TANF Grants	7,340	7,300	5,024	46.10%
Total number of grant recipients	16,856	16,716	10,308	63.52%
Number of adult grant recipients	3,610	3,587	1,404	157.12%
Number of child grant recipients	13,246	13,129	8,904	48.76%
Total payments	\$1,528,242	\$1,528,256	\$961,770	58.90%
Average payment per case	\$208.21	\$209.35	\$191.44	8.76%
Average payment per recipient	\$90.66	\$91.42	\$93.30	-2.83%
Number of cases with benefits reduced to zero	200	97	68	194.12%
Number of recipients with benefits reduced to zero	504	224	142	254.93%
Number of adult recipients with benefit reduced to zero	147	60	34	332.35%
Number of child recipients with benefit reduced to zero	357	164	108	230.56%

Two-Parent Families	Jul 31, 2020	June 2020	July 2019	Annual Change
Number of families receiving TANF Grants	570	577	219	160.27%
Total number of grant recipients	2,180	2,243	806	170.47%
Number of adult grant recipients	842	873	295	185.42%
Number of child grant recipients	1,338	1,370	511	161.84%
Total payments	\$160,862	\$165,519	\$50,222	220.30%
Average payment per case	\$282.21	\$286.86	\$229.32	23.06%
Average payment per recipient	\$73.79	\$73.79	\$62.31	18.42%
Number of cases with benefits reduced to zero	33	13	6	450.00%
Number of recipients with benefits reduced to zero	119	54	29	310.34%
Number of adult recipients with benefit reduced to zero	56	23	10	460.00%
Number of child recipients with benefit reduced to zero	63	31	19	231.58%

Note:

All data July 2014 and following will be broken out according to the new DFR region structure effective July 1 2014.

Source:



DIVISION OF FAMILY RESOURCES

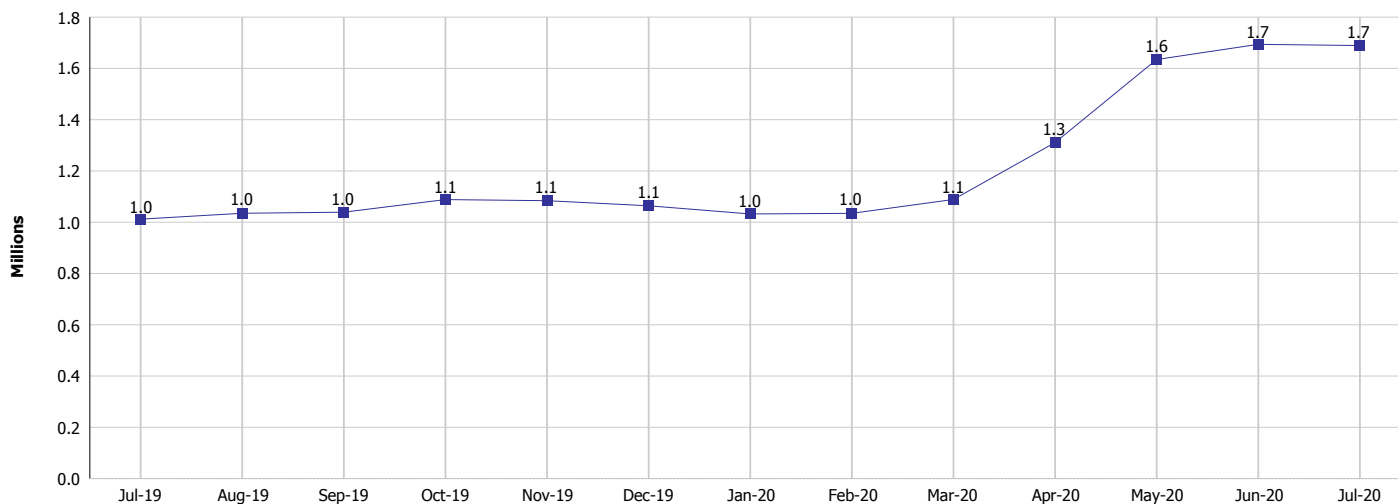
Monthly Management Report

Reporting Month: July 2020

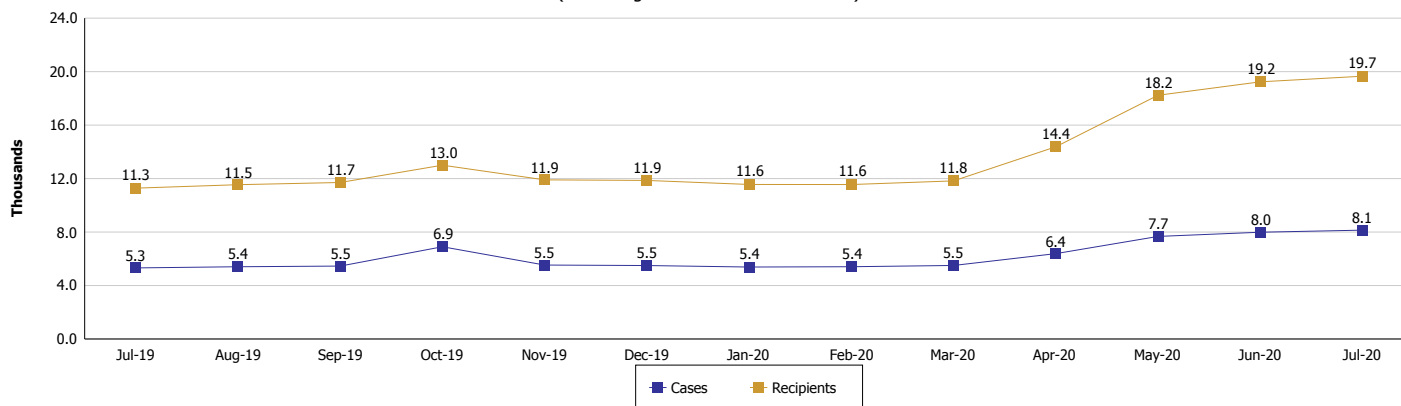
Location: Statewide

TEMPORARY ASSISTANCE FOR NEEDY FAMILIES (TANF)

TANF Cash Assistance
(TANF Regular and TANF Two-Parent)



TANF Cases and Recipients
(TANF Regular and TANF Two-Parent)



Note:

All data July 2014 and following will be broken out according to the new DFR region structure effective July 1 2014.



DIVISION OF FAMILY RESOURCES

Monthly Management Report

Reporting Month: July 2020

Location: Statewide

SUPPLEMENTAL NUTRITION ASSISTANCE PROGRAM (SNAP)

	July 2020	June 2020	July 2019	Annual Change
Total issuance	\$113,611,739	\$117,716,282	\$68,195,853	66.60%
Number of households receiving SNAP benefits	300,451	306,765	258,339	16.30%
Number of recipients	650,392	670,509	573,295	13.45%
Average issuance per household	\$378.14	\$383.73	\$263.98	43.25%
Average issuance per recipient	\$174.68	\$175.56	\$118.95	46.85%

Note:

All data July 2014 and following will be broken out according to the new DFR region structure effective July 1 2014.

SNAP ERROR RATES

	February 2020	January 2020	Cumulative FFY 2019
FFY Cumulative Positive Error Rate	7.37%	6.22%	8.30%
Monthly Positive Error Rate	10.67%	1.28%	NA
FFY Cumulative Negative Error Rate	41.56%	37.55%	40.03%
Monthly Negative Error Rate	60.00%	46.03%	NA

Note:

All data July 2014 and following will be broken out according to the new DFR region structure effective July 1 2014.

Notes:

Reporting periods for SNAP Error Rates reflect the review period and Federal submission deadline. The month reported above is the month in which an action was taken included in the review sample.

Positive actions are those which produced an issuance of benefits to a household. Negative actions are those which closed or denied benefits to a household.

Error Rate data is reported by the state before the federal agency has accepted and finalized the results. This rate is subject to revision based upon: completion and submission of outstanding reviews; final review corrections; and completion of previously dropped reviews. Monthly numbers are taken from end-of-month totals. The error status of cases may be changed by the State or Federal Review process, which would cause a change that might not be reflected in the previous monthly numbers.



DIVISION OF FAMILY RESOURCES

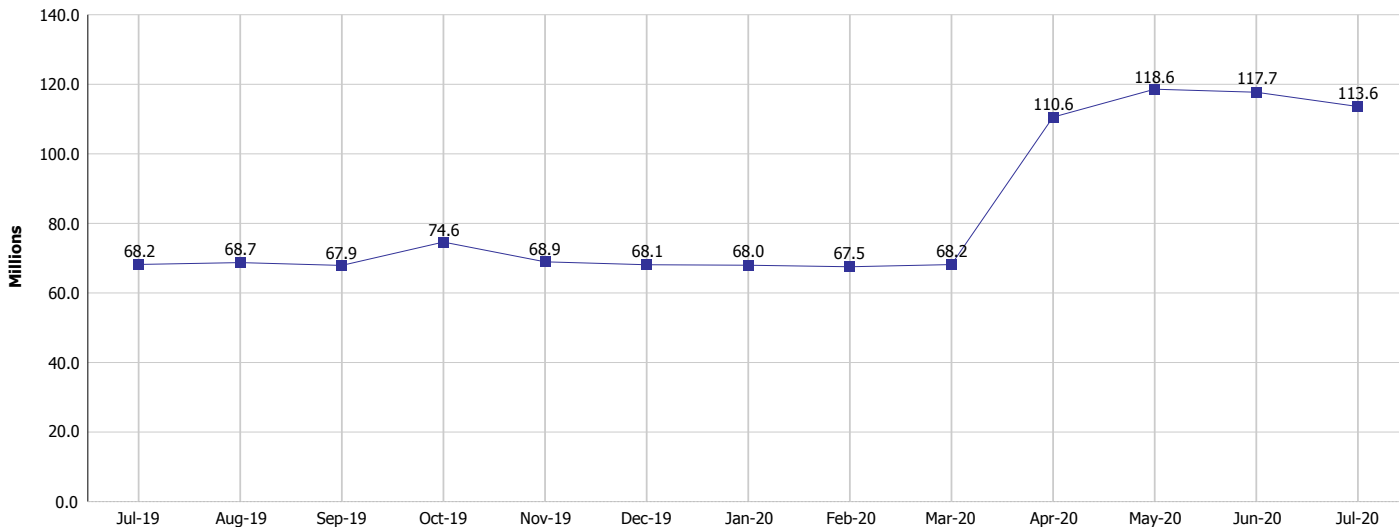
Monthly Management Report

Reporting Month: July 2020

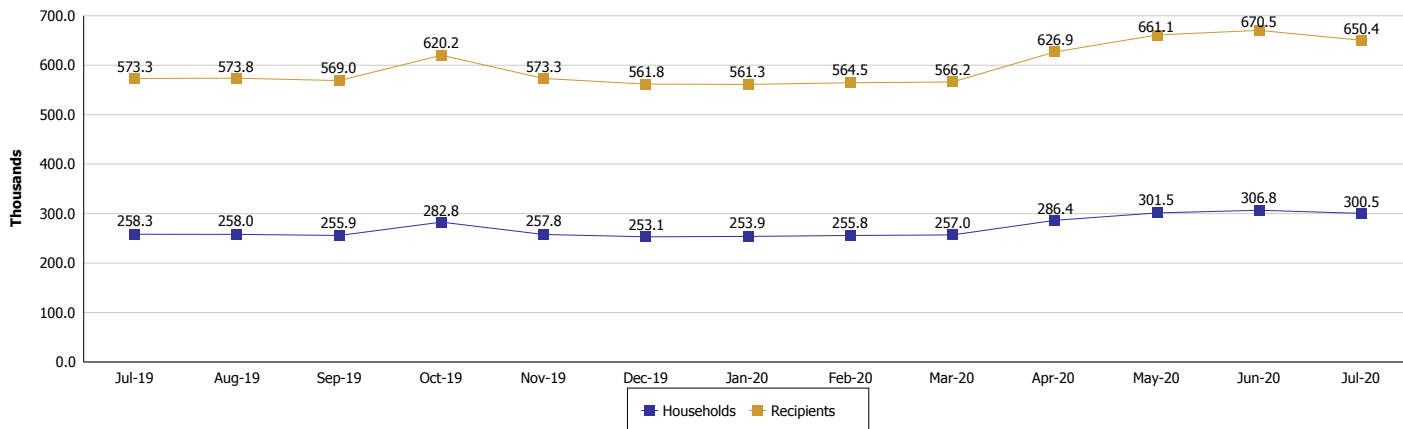
Location: Statewide

SUPPLEMENTAL NUTRITION ASSISTANCE PROGRAM (SNAP)

SNAP Issuance



SNAP Households and Recipients



Note:

All data July 2014 and following will be broken out according to the new DFR region structure effective July 1 2014.



DIVISION OF FAMILY RESOURCES

Monthly Management Report

Reporting Month: July 2020

Location: Statewide

HIP 2.0 and SNAP

	July 2020	June 2020	July 2019	Annual Change
Total HIP 2.0 Members	526,766	512,919	426,318	23.56%
HIP Members also SNAP Recipients	176,456	182,672	138,892	27.05%
Percentage HIP Members SNAP Recipients	33.5%	35.6%	32.6%	0.92
HIP Members SNAP ABAWDs	3,782	5,772	3,869	-2.25%
Percentage HIP Members SNAP ABAWDs	0.7%	1.1%	0.9%	-0.2

Note:

All data July 2014 and following will be broken out according to the new DFR region structure effective July 1 2014.



DIVISION OF FAMILY RESOURCES

Monthly Management Report

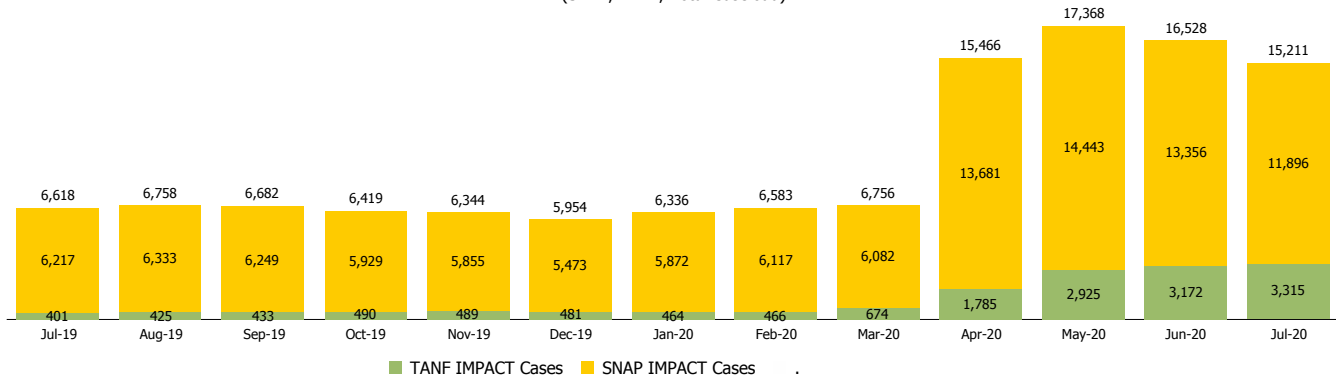
Reporting Month: July 2020

Location: Statewide

INDIANA MANPOWER PLACEMENT AND COMPREHENSIVE TRAINING (IMPACT)

	July 2020	June 2020	July 2019	Annual Change
Number of IMPACT cases	15,211	16,528	6,618	129.84%
Number of TANF IMPACT adults	3,315	3,172	401	726.68%
Number of SNAP IMPACT Cases	11,896	13,356	6,217	91.35%
Total number of adults employed	1,235	1,333	1,047	17.96%
Number of TANF IMPACT adults newly employed (within past 30 days)	165	208	83	98.80%
Number of SNAP IMPACT adults employed	1,070	1,125	964	11.00%
Total number of adults ineligible due to employment	10,115	3,267	4,364	131.78%
Number of TANF adults ineligible due to employment	37	10	16	131.25%
Number of SNAP adults ineligible due to employment	10,078	3,257	4,348	131.78%

IMPACT Caseloads
(SNAP, TANF, Total Caseload)



Note:

All data July 2014 and following will be broken out according to the new DFR region structure effective July 1 2014.