



DIVISION OF FAMILY RESOURCES

Monthly Management Report May 2018

State of Indiana

Eric Holcomb
Governor

Family and Social Services Administration

Jennifer Walthall, M.D.
Secretary

Division of Family Resources

Adrienne Shields
Director

For questions regarding data on this report contact:
office.Communications@fssa.IN.gov



State of Indiana

Published July 2018



DIVISION OF FAMILY RESOURCES

Monthly Management Report

Reporting Month: May 2018

Location: Statewide

TEMPORARY ASSISTANCE FOR NEEDY FAMILIES (TANF)

Child-Only and One-Parent Families	May 31, 2018	April 2018	May 2017	Annual Change
Number of families receiving TANF Grants	5,938	6,165	6,674	-11.03%
Total number of grant recipients	12,212	12,748	13,632	-10.42%
Number of adult grant recipients	1,629	1,775	1,860	-12.42%
Number of child grant recipients	10,583	10,973	11,772	-10.10%
Total payments	\$1,132,483	\$1,197,090	\$1,262,255	-10.28%
Average payment per case	\$190.72	\$194.18	\$189.13	0.84%
Average payment per recipient	\$92.74	\$93.90	\$92.59	0.15%
Number of cases with benefits reduced to zero	93	93	113	-17.70%
Number of recipients with benefits reduced to zero	218	209	224	-2.68%
Number of adult recipients with benefit reduced to zero	49	50	47	4.26%
Number of child recipients with benefit reduced to zero	169	159	177	-4.52%

Two-Parent Families	May 31, 2018	April 2018	May 2017	Annual Change
Number of families receiving TANF Grants	241	249	353	-31.73%
Total number of grant recipients	947	980	1,487	-36.31%
Number of adult grant recipients	328	341	538	-39.03%
Number of child grant recipients	619	639	949	-34.77%
Total payments	\$49,398	\$50,798	\$76,229	-35.20%
Average payment per case	\$204.97	\$204.01	\$215.95	-5.08%
Average payment per recipient	\$52.16	\$51.83	\$51.26	1.75%
Number of cases with benefits reduced to zero	4	7	7	-42.86%
Number of recipients with benefits reduced to zero	13	23	23	-43.48%
Number of adult recipients with benefit reduced to zero	7	11	8	-12.50%
Number of child recipients with benefit reduced to zero	6	12	15	-60.00%

Note:

All data July 2014 and following will be broken out according to the new DFR region structure effective July 1 2014.

Source:



DIVISION OF FAMILY RESOURCES

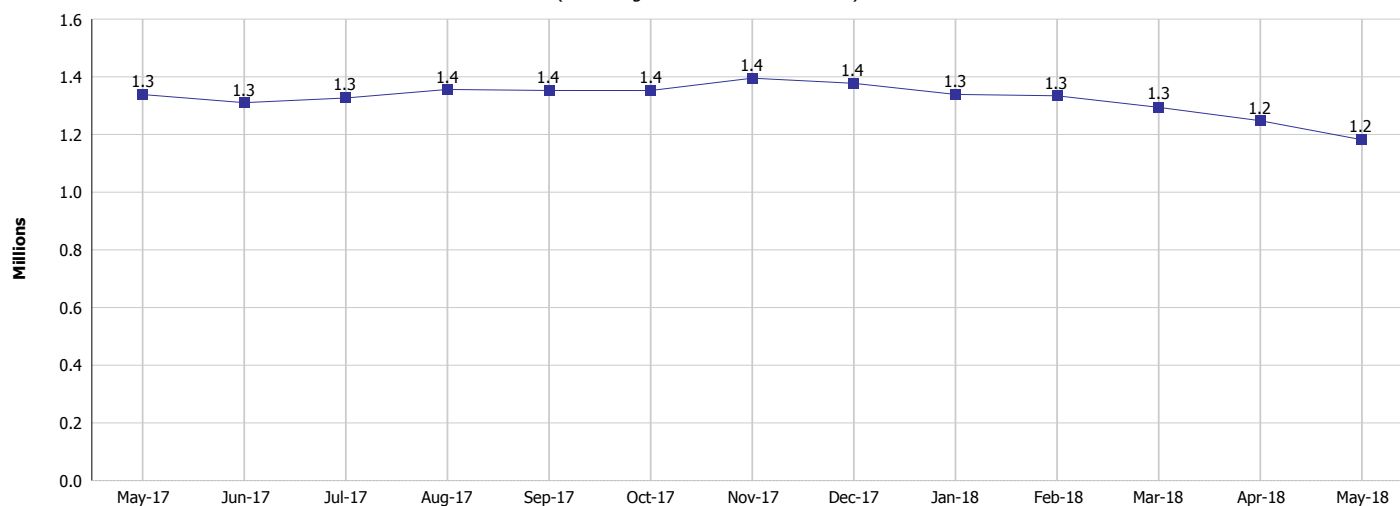
Monthly Management Report

Reporting Month: May 2018

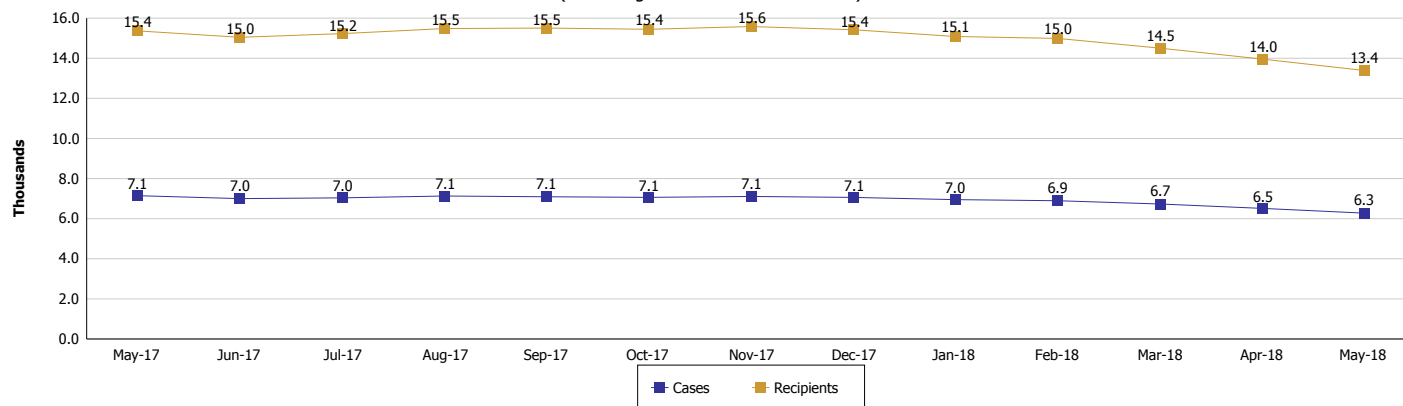
Location: Statewide

TEMPORARY ASSISTANCE FOR NEEDY FAMILIES (TANF)

TANF Cash Assistance
(TANF Regular and TANF Two-Parent)



TANF Cases and Recipients
(TANF Regular and TANF Two-Parent)



Note:

All data July 2014 and following will be broken out according to the new DFR region structure effective July 1 2014.



DIVISION OF FAMILY RESOURCES

Monthly Management Report

Reporting Month: May 2018

Location: Statewide

SUPPLEMENTAL NUTRITION ASSISTANCE PROGRAM (SNAP)

	May 2018	April 2018	May 2017	Annual Change
Total issuance	\$71,654,651	\$71,739,831	\$78,820,567	-9.09%
Number of households receiving SNAP benefits	270,609	273,055	291,881	-7.29%
Number of recipients	606,277	611,401	657,971	-7.86%
Average issuance per household	\$264.79	\$262.73	\$270.04	-1.95%
Average issuance per recipient	\$118.19	\$117.34	\$119.79	-1.34%

Note:

All data July 2014 and following will be broken out according to the new DFR region structure effective July 1 2014.

SNAP ERROR RATES

	January 2018	December 2017	November 2017	Cumulative FFY 2017
FFY Cumulative Positive Error Rate	4.73%	5.70%	5.20%	9.19%
Monthly Positive Error Rate	1.65%	6.73%	4.52%	NA
FFY Cumulative Negative Error Rate	42.80%	40.56%	37.40%	30.52%
Monthly Negative Error Rate	50.00%	47.37%	44.44%	NA

Note:

All data July 2014 and following will be broken out according to the new DFR region structure effective July 1 2014.

Notes:

Reporting periods for SNAP Error Rates reflect the review period and Federal submission deadline. The month reported above is the month in which an action was taken included in the review sample.

Positive actions are those which produced an issuance of benefits to a household. Negative actions are those which closed or denied benefits to a household.

Error Rate data is reported by the state before the federal agency has accepted and finalized the results. This rate is subject to revision based upon: completion and submission of outstanding reviews; final review corrections; and completion of previously dropped reviews. Monthly numbers are taken from end-of-month totals. The error status of cases may be changed by the State or Federal Review process, which would cause a change that might not be reflected in the previous monthly numbers.



DIVISION OF FAMILY RESOURCES

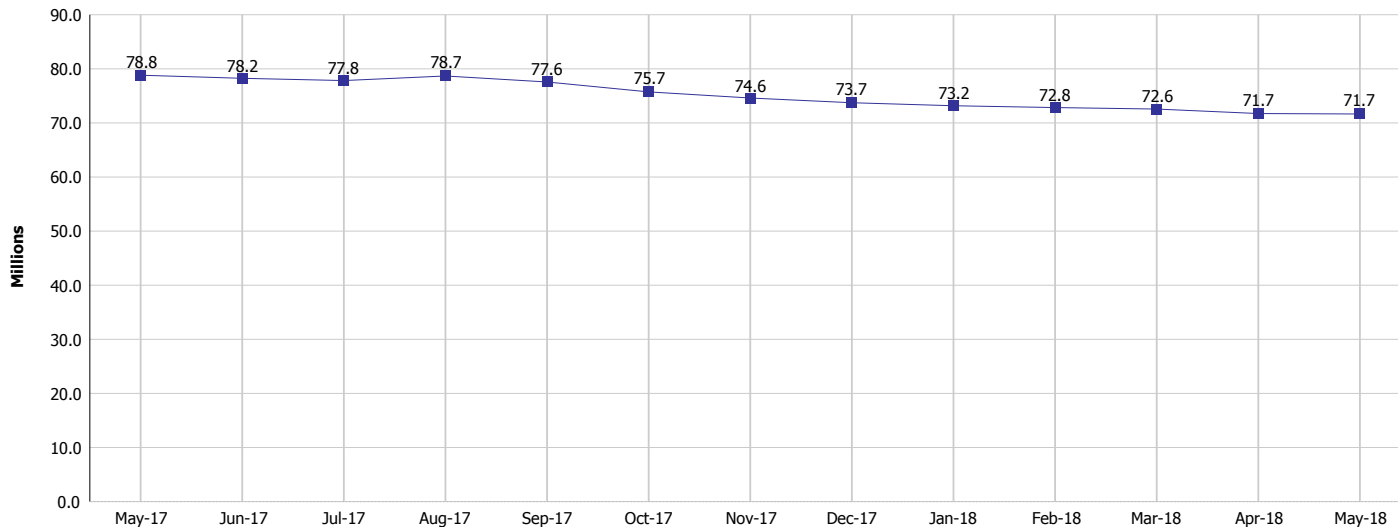
Monthly Management Report

Reporting Month: May 2018

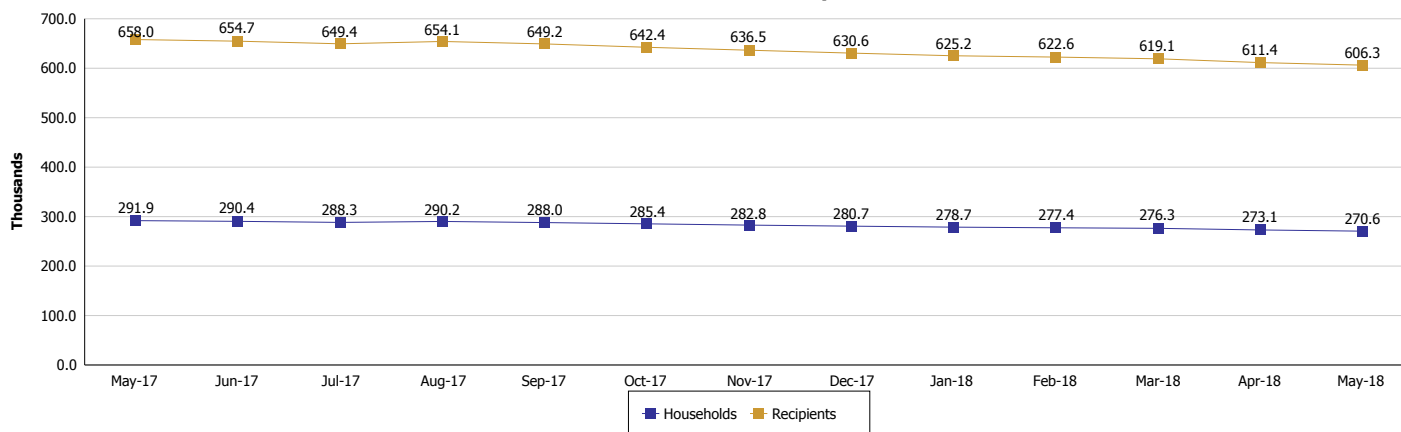
Location: Statewide

SUPPLEMENTAL NUTRITION ASSISTANCE PROGRAM (SNAP)

SNAP Issuance



SNAP Households and Recipients



Note:

All data July 2014 and following will be broken out according to the new DFR region structure effective July 1 2014.



DIVISION OF FAMILY RESOURCES

Monthly Management Report

Reporting Month: May 2018

Location: Statewide

HIP 2.0 and SNAP

	May 2018	April 2018	May 2017	Annual Change
Total HIP 2.0 Members	436,007	439,520	439,529	-0.80%
HIP Members also SNAP Recipients	144,533	145,083	153,711	-5.97%
Percentage HIP Members SNAP Recipients	33.1%	33.0%	35.0%	-2.28%
HIP Members SNAP ABAWDs	3,402	3,767	4,323	-21.30%
Percentage HIP Members SNAP ABAWDs	0.8%	0.9%	1.0%	-2.28%

Note:

All data July 2014 and following will be broken out according to the new DFR region structure effective July 1 2014.



DIVISION OF FAMILY RESOURCES

Monthly Management Report

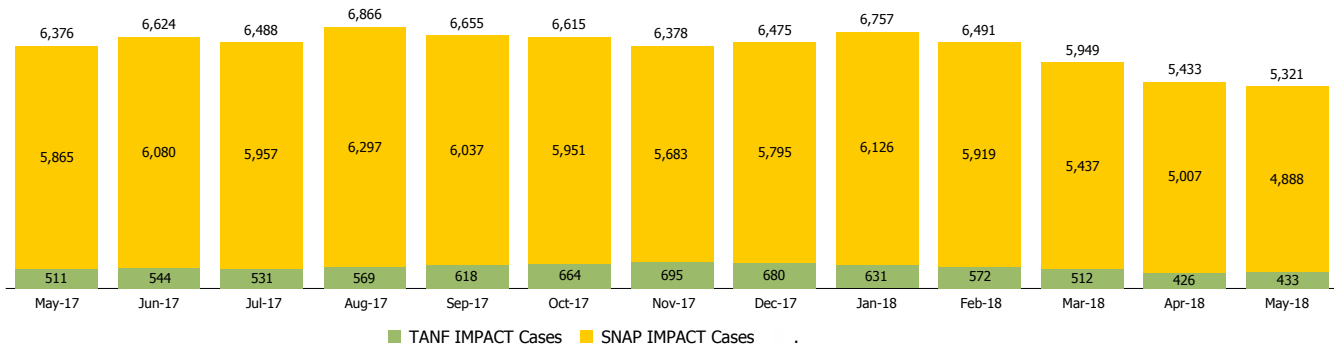
Reporting Month: May 2018

Location: Statewide

INDIANA MANPOWER PLACEMENT AND COMPREHENSIVE TRAINING (IMPACT)

	May 2018	April 2018	May 2017	Annual Change
Number of IMPACT cases	5,321	5,433	6,376	-16.55%
Number of TANF IMPACT adults	433	426	511	-15.26%
Number of SNAP IMPACT Cases	4,888	5,007	5,865	-16.66%
Total number of adults employed	1,196	1,188	1,270	-5.83%
Number of TANF IMPACT adults newly employed (within past 30 days)	106	104	119	-10.92%
Number of SNAP IMPACT adults employed	1,090	1,084	1,151	-5.30%
Total number of adults ineligible due to employment	5,499	4,824	5,214	5.47%
Number of TANF adults ineligible due to employment	15	16	19	-21.05%
Number of SNAP adults ineligible due to employment	5,484	4,808	5,195	5.56%

IMPACT Caseloads
(SNAP, TANF, Total Caseload)



Note:

All data July 2014 and following will be broken out according to the new DFR region structure effective July 1 2014.