



## DIVISION OF FAMILY RESOURCES

# Monthly Management Report November 2015

### State of Indiana

Michael R. Pence  
Governor

### Family and Social Services Administration

John J. Wernert, M.D.  
Secretary

### Division of Family Resources

Adrienne Shields  
Director

For questions regarding data on this report contact:  
[office.Communications@fssa.IN.gov](mailto:office.Communications@fssa.IN.gov)



## State of Indiana

Published December 2015



## DIVISION OF FAMILY RESOURCES

### Monthly Management Report

Reporting Month: November 2015

Location: Statewide

#### TEMPORARY ASSISTANCE FOR NEEDY FAMILIES (TANF)

Child-Only and One-Parent Families	November 2015	October 2015	November 2014	Annual Change
Number of families receiving TANF Grants	8,200	8,293	9,275	-11.59%
Total number of grant recipients	17,393	17,596	19,913	-12.66%
Number of adult grant recipients	2,780	2,807	3,327	-16.44%
Number of child grant recipients	14,613	14,789	16,586	-11.90%
Total payments	\$1,545,742	\$1,572,060	\$1,747,355	-11.54%
Average payment per case	\$188.51	\$189.56	\$188.39	0.06%
Average payment per recipient	\$88.87	\$89.34	\$87.75	1.28%
Number of cases with benefits reduced to zero	274	229	343	-20.12%
Number of recipients with benefits reduced to zero	596	498	739	-19.35%
Number of adult recipients with benefit reduced to zero	137	113	180	-23.89%
Number of child recipients with benefit reduced to zero	459	385	559	-17.89%

Two-Parent Families	November 2015	October 2015	November 2014	Annual Change
Number of families receiving TANF Grants	539	532	618	-12.78%
Total number of grant recipients	2,165	2,144	2,565	-15.59%
Number of adult grant recipients	839	820	956	-12.24%
Number of child grant recipients	1,326	1,324	1,609	-17.59%
Total payments	\$118,841	\$117,130	\$132,263	-10.15%
Average payment per case	\$220.48	\$220.17	\$214.02	3.02%
Average payment per recipient	\$54.89	\$54.63	\$51.56	6.45%
Number of cases with benefits reduced to zero	24	21	29	-17.24%
Number of recipients with benefits reduced to zero	92	86	110	-16.36%
Number of adult recipients with benefit reduced to zero	39	36	44	-11.36%
Number of child recipients with benefit reduced to zero	53	50	66	-19.70%

**Note:**

All data July 2014 and following will be broken out according to the new DFR region structure effective July 1 2014.

Source:



## DIVISION OF FAMILY RESOURCES

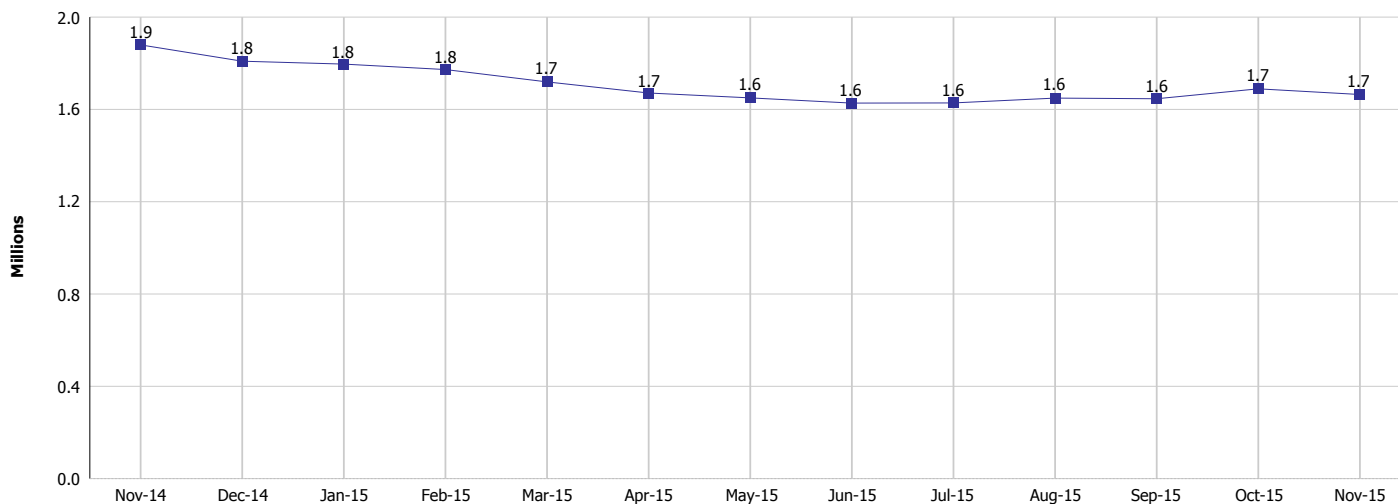
### Monthly Management Report

Reporting Month: November 2015

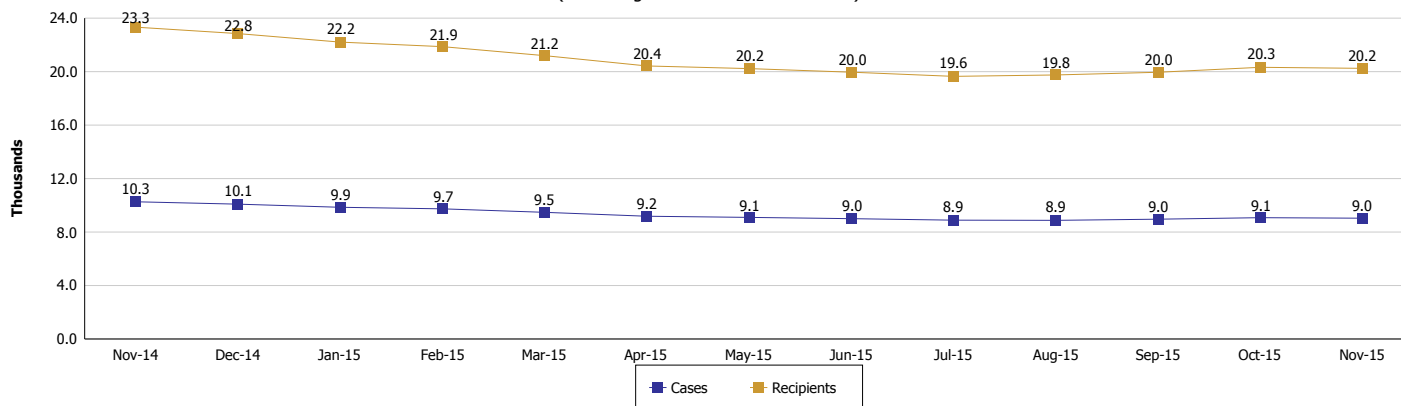
Location: Statewide

#### TEMPORARY ASSISTANCE FOR NEEDY FAMILIES (TANF)

**TANF Cash Assistance**  
(TANF Regular and TANF Two-Parent)



**TANF Cases and Recipients**  
(TANF Regular and TANF Two-Parent)



**Note:**

All data July 2014 and following will be broken out according to the new DFR region structure effective July 1 2014.



## DIVISION OF FAMILY RESOURCES

### Monthly Management Report

Reporting Month: November 2015

Location: Statewide

#### SUPPLEMENTAL NUTRITION ASSISTANCE PROGRAM (SNAP)

	November 2015	October 2015	November 2014	Annual Change
Total issuance	\$92,839,780	\$98,944,594	\$107,849,349	-13.92%
Number of households receiving SNAP benefits	340,000	362,348	389,861	-12.79%
Number of recipients	764,746	799,797	854,902	-10.55%
Average issuance per household	\$273.06	\$273.07	\$276.64	-1.29%
Average issuance per recipient	\$121.40	\$123.71	\$126.15	-3.77%

**Note:**

All data July 2014 and following will be broken out according to the new DFR region structure effective July 1 2014.

#### SNAP ERROR RATES

	July 2015	June 2015	May 2015	Cumulative FFY 2014
FFY Cumulative Positive Error Rate	5.42%	5.04%	5.31%	4.47%
Monthly Positive Error Rate	9.48%	2.66%	6.01%	NA
FFY Cumulative Negative Error Rate	16.78%	16.70%	16.84%	23.14%
Monthly Negative Error Rate	17.39%	15.62%	20.69%	NA

**Note:**

All data July 2014 and following will be broken out according to the new DFR region structure effective July 1 2014.

**Notes:**

Reporting periods for SNAP Error Rates reflect the review period and Federal submission deadline. The month reported above is the month in which an action was taken included in the review sample.

Positive actions are those which produced an issuance of benefits to a household. Negative actions are those which closed or denied benefits to a household.

Error Rate data is reported by the state before the federal agency has accepted and finalized the results. This rate is subject to revision based upon: completion and submission of outstanding reviews; final review corrections; and completion of previously dropped reviews. Monthly numbers are taken from end-of-month totals. The error status of cases may be changed by the State or Federal Review process, which would cause a change that might not be reflected in the previous monthly numbers.



# DIVISION OF FAMILY RESOURCES

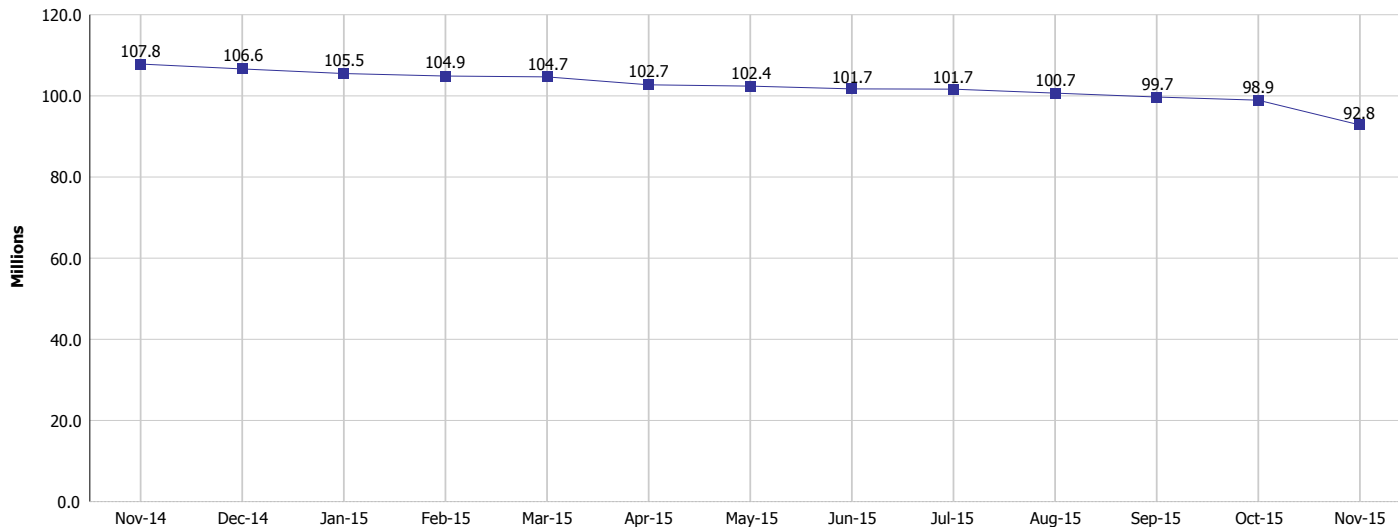
## Monthly Management Report

Reporting Month: November 2015

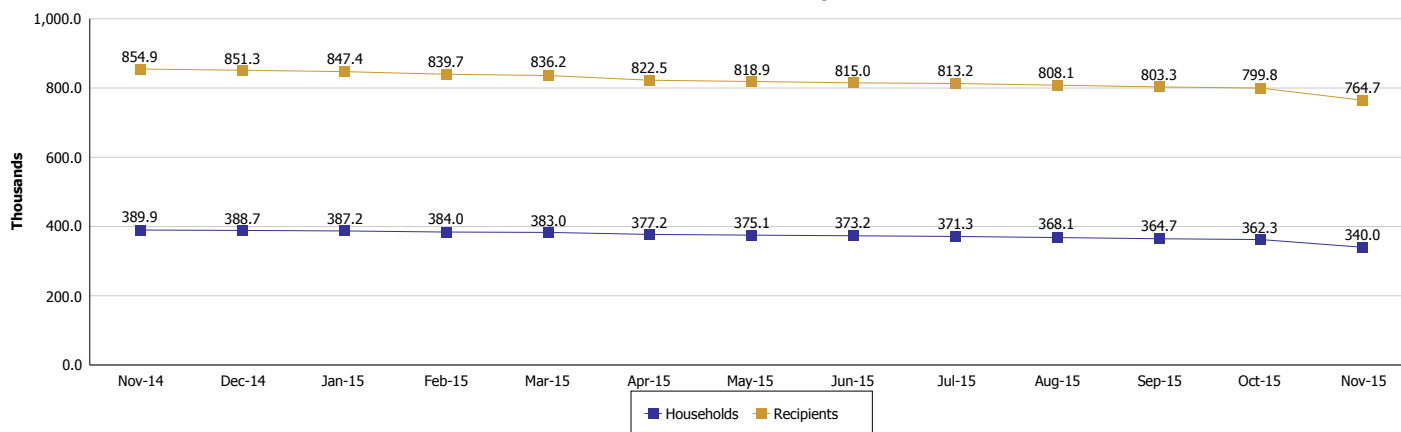
Location: Statewide

### SUPPLEMENTAL NUTRITION ASSISTANCE PROGRAM (SNAP)

#### SNAP Issuance



#### SNAP Households and Recipients



**Note:**

All data July 2014 and following will be broken out according to the new DFR region structure effective July 1 2014.



## DIVISION OF FAMILY RESOURCES

### Monthly Management Report

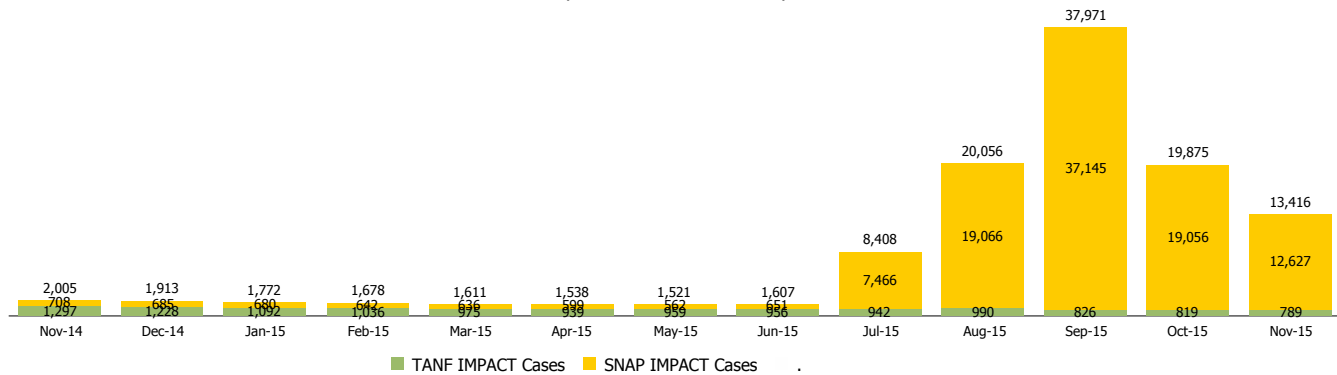
Reporting Month: November 2015

Location: Statewide

#### INDIANA MANPOWER PLACEMENT AND COMPREHENSIVE TRAINING (IMPACT)

	November 2015	October 2015	November 2014	Annual Change
Number of IMPACT cases	13,416	19,875	2,005	569.13%
Number of TANF IMPACT adults	789	819	1,297	-39.17%
Number of SNAP IMPACT Cases	12,627	19,056	708	1,683.47%
Total number of adults employed	1,678	2,771	237	608.02%
Number of TANF IMPACT adults newly employed (within past 30 days)	132	173	163	-19.02%
Number of SNAP IMPACT adults employed	1,546	2,598	74	1,989.19%
Total number of adults ineligible due to employment	8,871	7,293	3,689	140.47%
Number of TANF adults ineligible due to employment	22	18	31	-29.03%
Number of SNAP adults ineligible due to employment	8,849	7,275	3,658	141.91%

**IMPACT Caseloads**  
(SNAP, TANF, Total Caseload)



**Note:**

All data July 2014 and following will be broken out according to the new DFR region structure effective July 1 2014.