



DIVISION OF FAMILY RESOURCES

Monthly Management Report September 2013

State of Indiana

Michael R. Pence
Governor

Family and Social Services Administration

Debra F. Minott
Secretary

Division of Family Resources

Lance Rhodes
Director

For questions regarding data on this report contact:
office.Communications@fssa.IN.gov



State of Indiana

Published October 2013



DIVISION OF FAMILY RESOURCES

Monthly Management Report

Reporting Month: September 2013

Location: Statewide

TEMPORARY ASSISTANCE FOR NEEDY FAMILIES (TANF)

Child-Only and One-Parent Families	September 2013	August 2013	September 2012	Annual Change
Number of families receiving TANF Grants	11,043	11,109	13,908	-20.60%
Total number of grant recipients	24,204	24,327	31,983	-24.32%
Number of adult grant recipients	4,588	4,630	7,012	-34.57%
Number of child grant recipients	19,616	19,697	24,971	-21.44%
Total payments	\$2,048,391	\$2,063,172	\$2,613,661	-21.63%
Average payment per case	\$185.49	\$185.72	\$187.93	-1.29%
Average payment per recipient	\$84.63	\$84.81	\$81.72	3.56%
Number of cases with benefits reduced to zero	491	442	687	-28.53%
Number of recipients with benefits reduced to zero	1,127	982	1,705	-33.90%
Number of adult recipients with benefit reduced to zero	282	250	491	-42.57%
Number of child recipients with benefit reduced to zero	845	732	1,214	-30.40%

Two-Parent Families	September 2013	August 2013	September 2012	Annual Change
Number of families receiving TANF Grants	760	781	1,009	-24.68%
Total number of grant recipients	3,121	3,233	4,085	-23.60%
Number of adult grant recipients	1,220	1,272	1,601	-23.80%
Number of child grant recipients	1,901	1,961	2,484	-23.47%
Total payments	\$159,060	\$166,913	\$216,001	-26.36%
Average payment per case	\$209.29	\$213.72	\$214.07	-2.24%
Average payment per recipient	\$50.96	\$51.63	\$52.88	-3.62%
Number of cases with benefits reduced to zero	30	28	38	-21.05%
Number of recipients with benefits reduced to zero	111	103	148	-25.00%
Number of adult recipients with benefit reduced to zero	47	43	52	-9.62%
Number of child recipients with benefit reduced to zero	64	60	96	-33.33%



DIVISION OF FAMILY RESOURCES

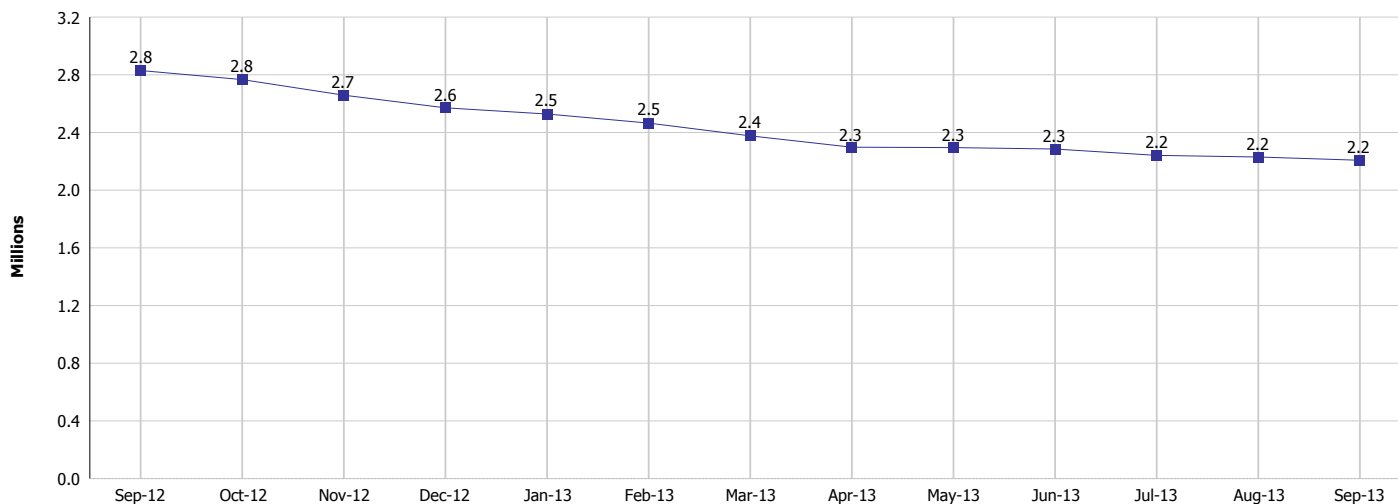
Monthly Management Report

Reporting Month: September 2013

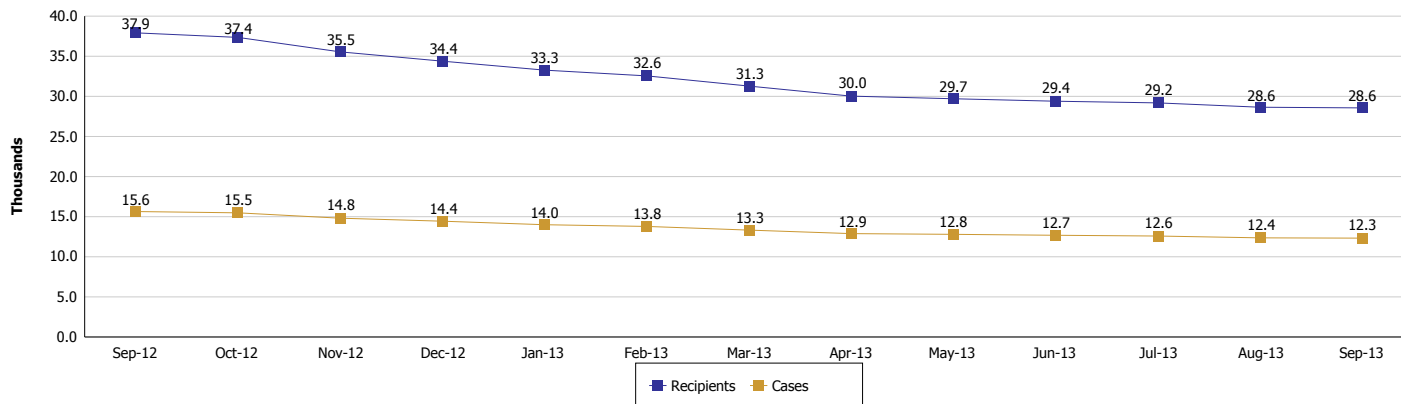
Location: Statewide

TEMPORARY ASSISTANCE FOR NEEDY FAMILIES (TANF)

TANF Cash Assistance
(TANF Regular and TANF UP)



TANF Cases and Recipients
(TANF Regular and TANF UP)





DIVISION OF FAMILY RESOURCES

Monthly Management Report

Reporting Month: September 2013

Location: Statewide

SUPPLEMENTAL NUTRITION ASSISTANCE PROGRAM (SNAP)

	September 2013	August 2013	September 2012	Annual Change
Total issuance	\$121,989,548	\$122,499,496	\$122,618,428	-0.51%
Number of households receiving SNAP benefits	418,979	419,948	410,930	1.96%
Number of recipients	928,662	931,737	923,253	0.59%
Average issuance per household	\$291.16	\$291.70	\$298.39	-2.42%
Average issuance per recipient	\$131.36	\$131.47	\$132.81	-1.09%

SNAP ERROR RATES

	May 2013	April 2013	March 2013	Cumulative FFY 2012
FFY Cumulative Positive Error Rate	3.74%	4.01%	4.13%	2.90%
Monthly Positive Error Rate	1.69%	3.07%	7.39%	NA
FFY Cumulative Negative Error Rate	19.26%	19.95%	20.76%	17.40%
Monthly Negative Error Rate	14.29%	15.25%	18.52%	NA

Notes:

Reporting periods for SNAP Error Rates reflect the review period and Federal submission deadline. The month reported above is the month in which an action was taken included in the review sample.

Positive actions are those which produced an issuance of benefits to a household. Negative actions are those which closed or denied benefits to a household.

Error Rate data is reported by the state before the federal agency has accepted and finalized the results. This rate is subject to revision based upon: completion and submission of outstanding reviews; final review corrections; and completion of previously dropped reviews. Monthly numbers are taken from end-of-month totals. The error status of cases may be changed by the State or Federal Review process, which would cause a change that might not be reflected in the previous monthly numbers.



DIVISION OF FAMILY RESOURCES

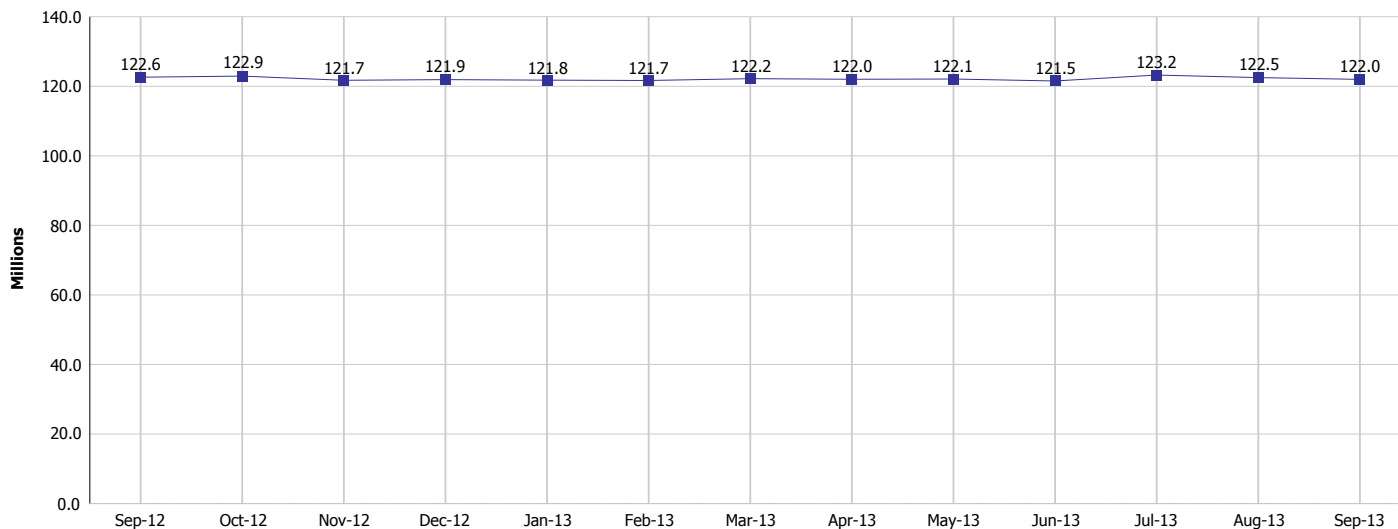
Monthly Management Report

Reporting Month: September 2013

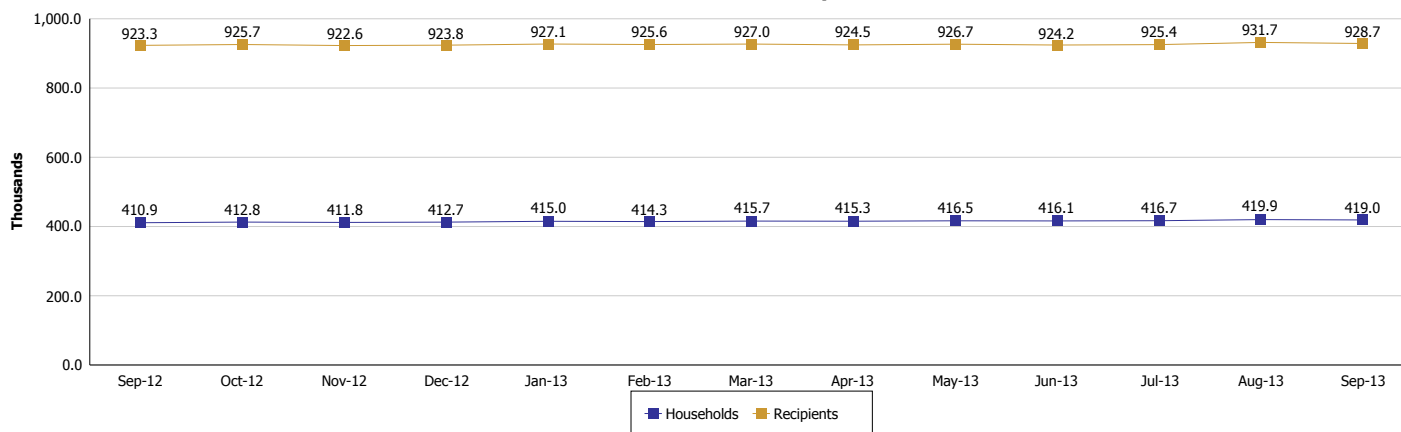
Location: Statewide

SUPPLEMENTAL NUTRITION ASSISTANCE PROGRAM (SNAP)

SNAP Issuance



SNAP Households and Recipients





DIVISION OF FAMILY RESOURCES

Monthly Management Report

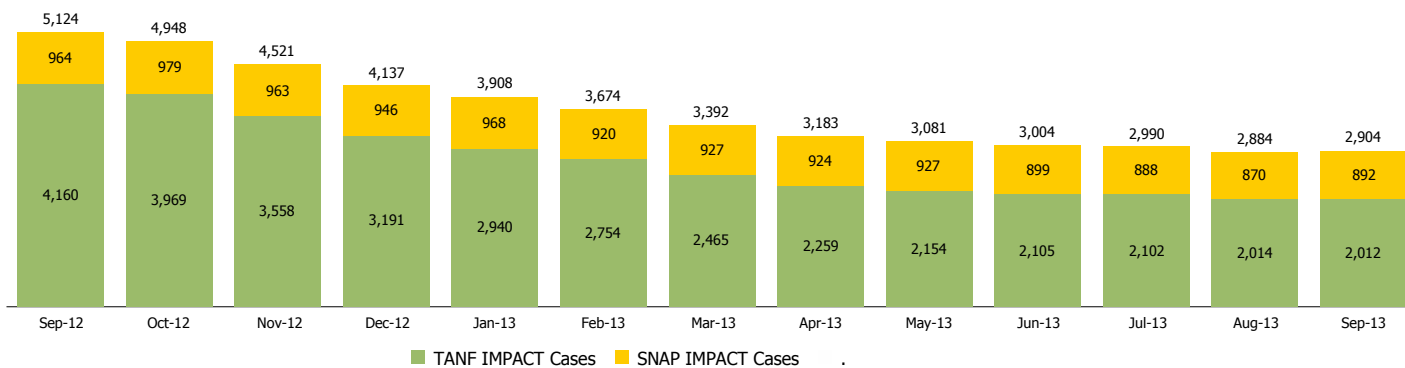
Reporting Month: September 2013

Location: Statewide

INDIANA MANPOWER PLACEMENT AND COMPREHENSIVE TRAINING (IMPACT)

	September 2013	August 2013	September 2012	Annual Change
Number of IMPACT cases	2,904	2,884	5,124	-43.33%
Number of TANF IMPACT Cases	2,012	2,014	4,160	-51.63%
Number of SNAP IMPACT Cases	892	870	964	-7.47%
Total number of adults employed	262	296	374	-29.95%
Number of TANF IMPACT adults employed	198	235	305	-35.08%
Number of SNAP IMPACT adults employed	64	61	69	-7.25%
Total number of adults ineligible due to employment	1,822	1,776	1,674	8.84%
Number of TANF adults ineligible due to employment	20	32	31	-35.48%
Number of SNAP adults ineligible due to employment	1,802	1,744	1,643	9.68%

IMPACT Caseloads
(SNAP, TANF, Total Caseload)





DIVISION OF FAMILY RESOURCES

Monthly Management Report

Reporting Month: September 2013

Location: Statewide

CHILD CARE

	September 2013	August 2013	September 2012	Annual Change
Total Subsidized Child Care Payments	\$13,008,888	\$14,137,397	\$11,711,561	11.08%
Total Number of CCDF Children	36,754	36,779	33,150	10.87%
Total Number of licensed Child Care Homes	2,818	2,818	2,841	-0.81%
Licensed Capacity of Child Care Homes	35,755	35,773	35,631	0.35%
Total Number of Licensed CC Centers	592	588	591	0.17%
Licensed Capacity of CC Centers	64,440	64,213	64,070	0.58%
Total Number of Registered Ministries (Capacity not Regulated)	659	661	712	-7.44%