



MONTHLY MANAGEMENT REPORT
Division of Family Resources
October 2006

October 2006

State of Indiana
Mitchell E. Daniels, Jr.
Governor

**Family and Social Services
Administration**

E. Mitchell Roob Jr.
Secretary

Division of Family Resources

James F. Robertson
Director

For question or to obtain a hard copy of this report contact:
DMRA@fssa.state.in.us



State of Indiana

Published December 2006



Division of Family Resources

Monthly Management Report

Statewide

October 2006

TEMPORARY ASSISTANCE FOR NEEDY FAMILIES (TANF)

Source: FSSA Reports _Statistics, ICES

TANF - REGULAR	October 2006	September 2006	October 2005	Annual Change
Number of families receiving TANF grants	40,685	40,716	43,375	-6.20%
Total number of grant recipients	109,317	109,621	117,309	-6.81%
Number of adult grant recipients	33,088	33,121	35,630	-7.13%
Number of child grant recipients	76,229	76,500	81,679	-6.67%
Total payments	\$8,307,047	\$8,326,816	\$8,969,477	-7.39%
Average payment per case	\$204.18	\$204.51	\$206.79	-1.26%
Average payment per person	\$75.99	\$75.96	\$76.46	-0.61%
Number of TANF cases with benefits reduced to zero	4,864	4,816	4,982	-2.37%
Number of TANF recipients with benefits reduced to zero	14,411	14,206	14,762	-2.38%
Number of adult recipients	4,774	4,734	4,908	-2.73%
Number of child recipients	9,637	9,472	9,854	-2.20%
TANF - UNEMPLOYED PARENT				
Number of families receiving TANF-UP grants	1,780	1,798	2,062	-13.68%
Number of recipients receiving TANF-UP grants	7,757	7,771	8,985	-13.67%
Number of adult grant recipients	3,557	3,592	4,123	-13.73%
Number of child grant recipients	4,200	4,179	4,862	-13.62%
Total payments	\$473,129	\$475,123	\$561,130	-15.68%
Average payment per case	\$265.80	\$264.25	\$272.13	-2.32%
Average payment per person	\$60.99	\$61.14	\$62.45	-2.33%
Number of TANF-UP cases with benefits reduced to zero	350	362	369	-5.15%
Number of TANF-UP recipients with benefits reduced to zero	1,583	1,632	1,639	-3.42%
Number of adult recipients	700	724	736	-4.89%
Number of child recipients	883	908	903	-2.21%

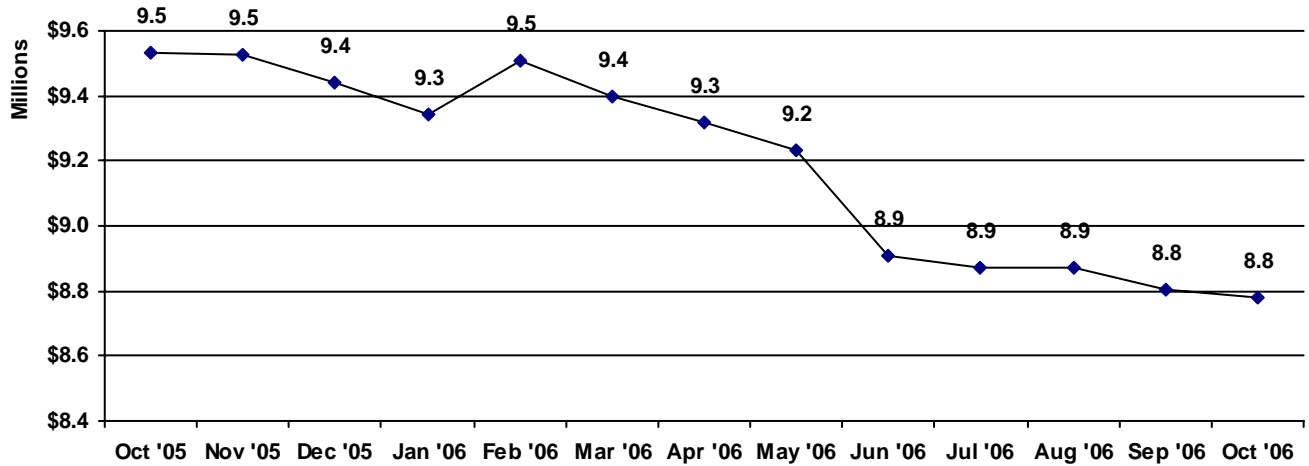
All data presented in this report was collected at the end of the reporting month.



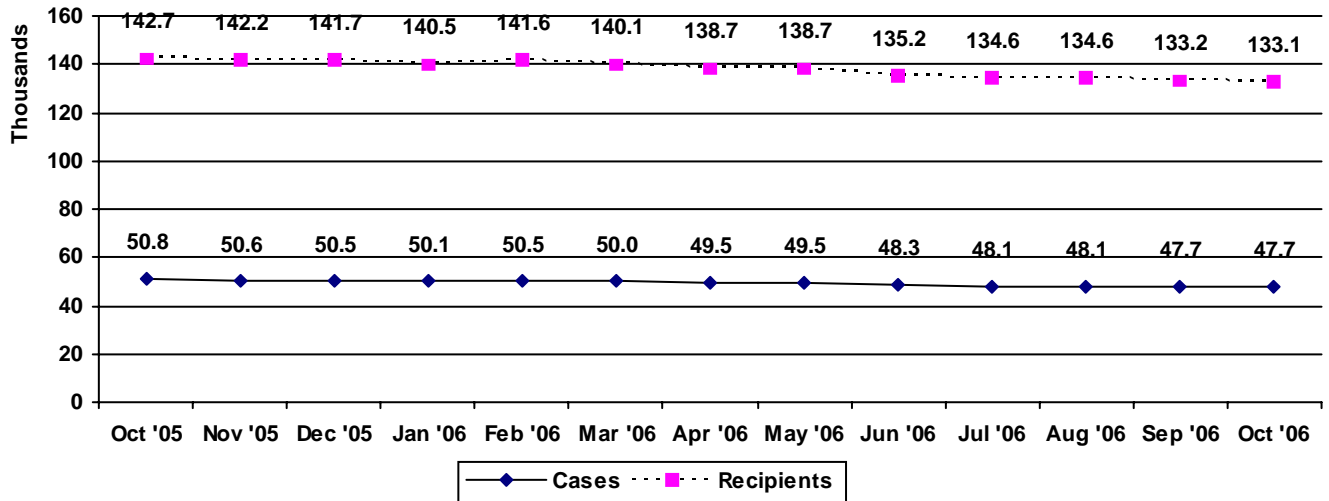
Division of Family Resources Monthly Management Report Statewide October 2006

TEMPORARY ASSISTANCE FOR NEEDY FAMILIES (TANF) Source: FSSA Reports _Statistics, ICES

TANF Regular And TANF UP Cash Assistance



**TANF Cases and Recipients
(TANF Regular and TANF UP)**



All data presented in this report was collected at the end of the reporting month.



**Division of Family Resources
Monthly Management Report
Statewide
October 2006**

FOOD STAMPS

Source: FSSA Reports Statistics, ICES

	October 2006	September 2006	October 2005	Annual % Change
Total stamps issued	\$55,858,728	\$53,839,039	\$54,188,070	3.08%
Number of households receiving stamps	252,238	250,301	245,579	2.71%
Number of recipients	582,652	577,610	566,569	2.84%
Average stamps per household	\$221.45	\$215.10	\$220.65	0.36%
Average stamps per recipient	\$95.87	\$93.21	\$95.64	0.24%

FOOD STAMPS ERROR RATES

Source: FSSA Reports Statistics, ICES

	July 2006	June 2006	May 2006	Cumulative FFY 2005
FFY Cumulative Positive Error Rate	6.78%	6.66%	6.46%	6.44%
Monthly Positive Error Rate	7.93%	8.40%	11.85%	NA
FFY Cumulative Negative Error Rate	5.52%	5.64%	6.19%	4.17%
Monthly Negative Error Rate	4.48%	2.27%	6.56%	NA

Error Rate data is reported by the state before the federal agency has accepted and finalized the results. This rate is subject to revision. Monthly numbers are taken from the end of the month totals. Error status of cases may be changed by either State or Federal Review process, which would cause a change that might not be reflected in the previous monthly numbers.

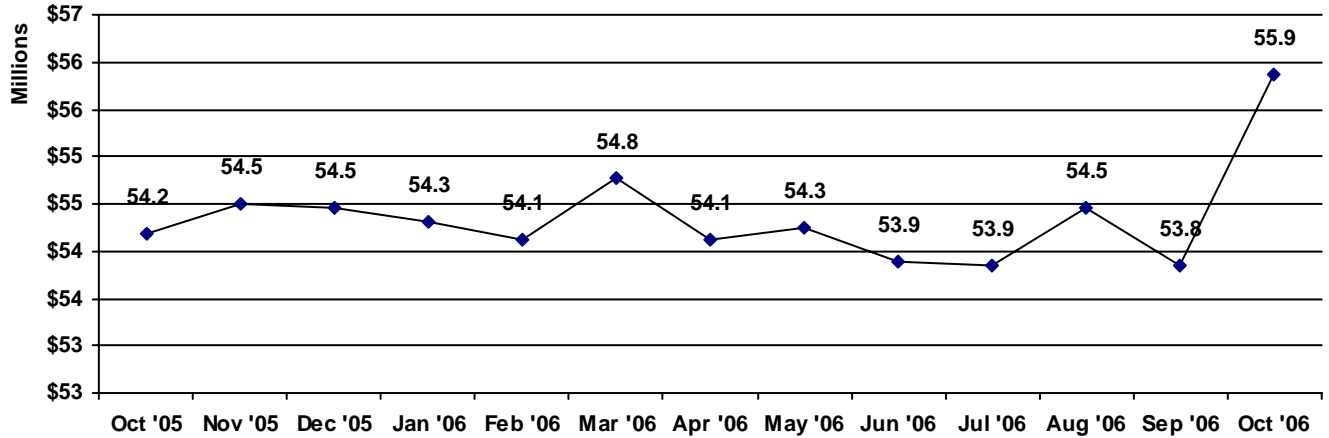
All data presented in this report was collected at the end of the reporting month.



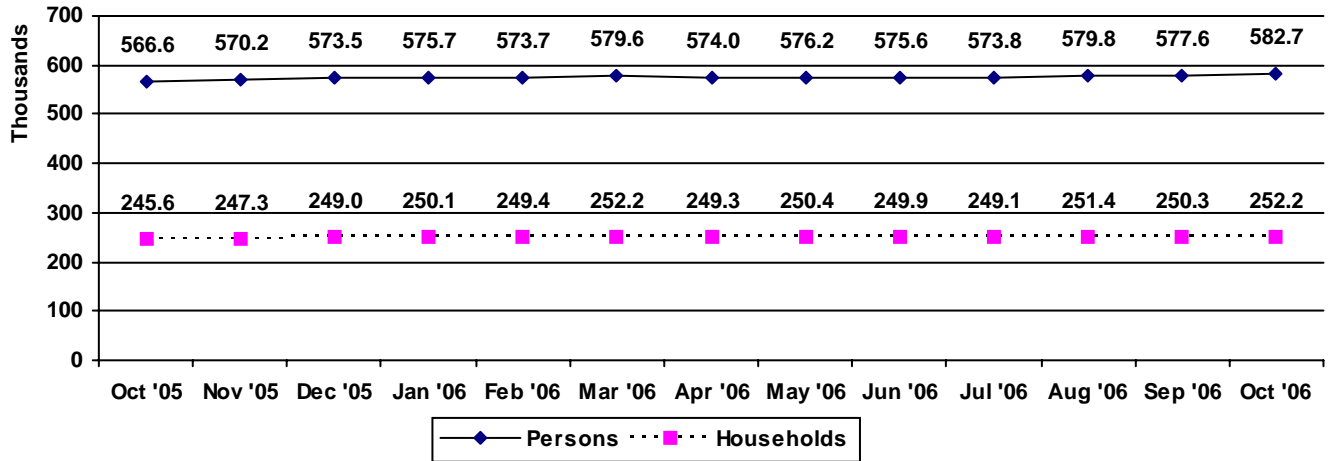
Division of Family Resources Monthly Management Report Statewide October 2006

FOOD STAMPS Source: FSSA Reports _Statistics, ICES

Food Stamps Issued



Food Stamps Households and Recipients



All data presented in this report was collected at the end of the reporting month.



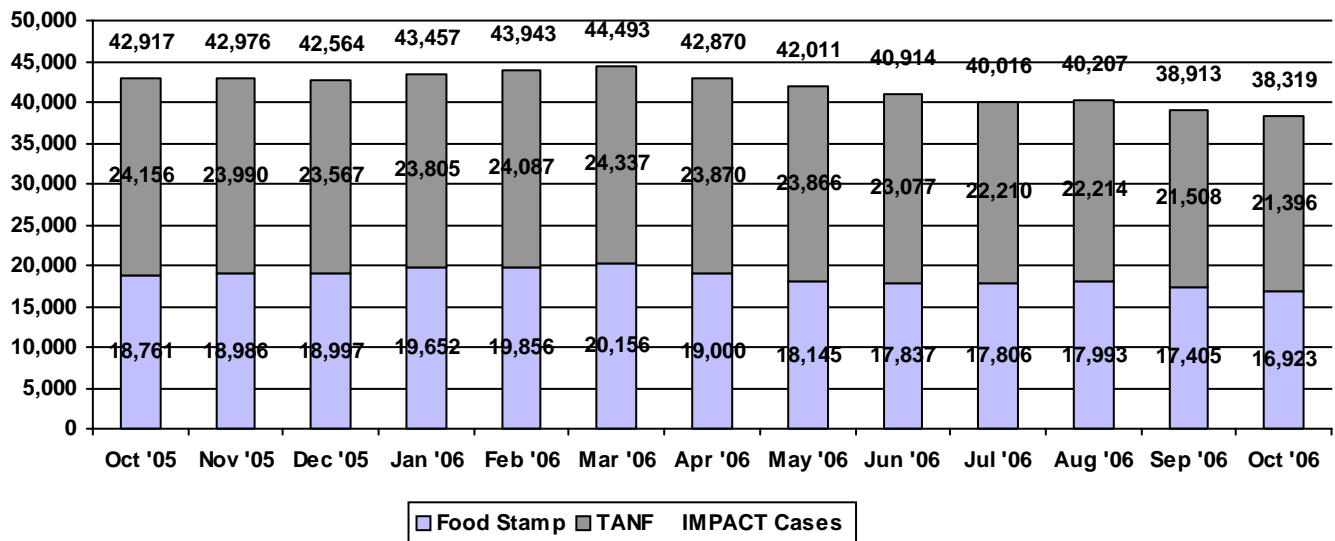
Division of Family Resources Monthly Management Report Statewide October 2006

IMPACT

Source: FSSA Reports_Statistics; FSSA Data Warehouse Project (Employed data)

	October 2006	September 2006	October 2005	Annual % Change
Number of IMPACT cases (See IMPACT note)	38,319	38,913	42,917	-10.71%
Number of TANF IMPACT Cases	21,396	21,508	24,156	-11.43%
Number of Food Stamp Cases	16,923	17,405	18,761	-9.80%
Total number of adults employed	3,782	3,872	3,335	13.40%
Number of TANF IMPACT adults employed	1,786	1,769	1,721	3.78%
Number of Food Stamp adults employed	1,996	2,103	1,614	23.67%
Total number of adults ineligible due to employment	1,072	1,149	1,083	-1.02%
Number of TANF adults	283	277	285	-0.70%
Number of Food Stamp adults	789	872	798	-1.13%

IMPACT Caseloads



Prior to October 2003, IMPACT caseloads did not include Employed or Sanction clients. Beginning October 2003, ICES programming changes allowed the capturing of this data.

All data presented in this report was collected at the end of the reporting month.

Prepared by:
Office of Data Management, Reports, and Analysis

Published:
December 2006



Division of Family Resources Monthly Management Report Statewide October 2006

CHILD CARE Source: DFR Child Development, CCDF-Prodnew

	October 2006	September 2006	October 2005	Annual % Change
Total Subsidized Child Care Payments	\$16,678,724	\$10,735,166	\$13,605,703	22.59%
CCDF Child Care Voucher Payments	\$16,375,244	\$10,470,736	\$13,219,853	23.87%
CCDF Child Care Contract Payments	\$303,481	\$264,430	\$385,850	-21.35%
Number of CCDF Children	36,280	33,646	31,644	14.65%
Number of Licensed Child Care Homes	2,937	2,929	2,971	-1.14%
Licensed Capacity of Child Care Homes	35,911	35,782	36,036	-0.35%
Number of Licensed Child Care Centers	605	609	602	0.50%
Licensed Capacity of Child Care Centers	61,003	61,333	60,670	0.55%
Number of Registered Ministries (Capacity not regulated)	639	640	672	-4.91%

Child Care Contract Payment data is pulled approximately 17days after the end of the month and may not reflect all late payments and adjustments.

The Child Support and Child Services Sections previously appearing in this report will now be published by the Department of Child Services.

All data presented in this report was collected at the end of the reporting month.



Division of Family Resources
Monthly Management Report
Statewide

October 2006

State of Indiana
Family and Social Services Administration

Monthly Management Report
Definitions of Elements

TANF

The Temporary Assistance for Needy Families (TANF) Program provides cash payments to eligible families with children.

TANF Regular

Number of Families

Total number of households or family units participating in TANF- Regular and TANF-I (Incapacitated Parent). It does not include TANF - UP (Unemployed Parent).

Recipient

A person receiving TANF benefits. There may be more than one recipient in a TANF case.

"**Adult**" recipient is a person 21 years or older or a person 18 or over with at least one child.

"**Child**" recipient is an unmarried person under 18 deprived of parental support and living with a specified relative.

Payments

Total cash assistance dollars paid to TANF recipients during the month.

Average payment per Case

Total TANF payments divided by the number of TANF cases receiving a grant. A "case" is a household or family unit participating in TANF- Regular and TANF-I (Incapacitated Parent). It does not include TANF - UP (Unemployed Parent).

Average payment per Recipient

Total TANF payments divided by the number of TANF recipients receiving a grant.

Cases with benefits reduced to zero

TANF families whose cash assistance has been reduced to zero due to income or penalty.

TANF UP (Unemployed Parent Program)

Number of Families

Total number of households or family units participating in TANF UP.

Recipient

A person receiving TANF benefits. There may be more than one recipient in a TANF case.

"**Adult**" recipient is a person 21 years or older or a person 18 or over with at least one child.

"**Child**" recipient is an unmarried person under 18 deprived of parental support and living with a specified relative.

Payments

Total cash assistance dollars paid to TANF recipients during the month.

Average payment per Case

Total TANF payments divided by the number of TANF cases receiving a grant. A "case" is a household or family unit participating in TANF UP.

Average payment per Recipient

Total TANF payments divided by the number of TANF recipients receiving a grant.

Cases with benefits reduced to zero

TANF families whose cash assistance has been reduced to zero due to income or penalty.

All data presented in this report was collected at the end of the reporting month.



Division of Family Resources
Monthly Management Report
Statewide
October 2006

State of Indiana
Family and Social Services Administration

Monthly Management Report
Definitions of Elements

Food Stamps (FS)

Indiana's Food Stamp Program helps eligible low income families supplement their food purchasing dollars with food stamp coupons.

Total Stamps Issued

Dollar value of total food stamps issued during the month.

Total Households

The number of households participating in the FS program.

Total Persons

The number of persons participating in the FS program.

Average Stamps per Household

The total value of food stamps divided by the number of households.

Average Stamps per Person

The total value of food stamps divided by the total number of recipients.

Positive Error Rate

Dollars paid in error divided by total dollars.

Negative Error Rate

Number of erroneously closed or denied cases divided by total number of cases in sample.

Unregressed

Error rate reported by the state before the federal agency has accepted and finalized the results. This rate is subject to revision.

Employment and Training

IMPACT assists TANF/Food Stamp families to become self-sufficient by helping to provide education, training, and job opportunities and overcoming personal barriers to employment.

Total IMPACT Cases

The total number of active cases with IMPACT activities during the month.

IMPACT-TANF

The number of active TANF cases with IMPACT activities during the month.

IMPACT-Food Stamp

The number of active Food Stamp cases with IMPACT activities during the month.

Total Adults Employed

The total number of IMPACT adults employed during the month.

TANF Adults Employed

The total number of TANF-IMPACT participants that were reported employed during the month.

Food Stamp Adults Employed

The total number of FS-IMPACT participants that were reported employed during the month.

Total Adults ineligible due to employment

The total number of IMPACT adults cases closed during the month because of income from employment.

All data presented in this report was collected at the end of the reporting month.



Division of Family Resources
Monthly Management Report
Statewide
October 2006

State of Indiana
Family and Social Services Administration

Monthly Management Report
Definitions of Elements

Child Care

Indiana's child care program provides child caring services reimbursement to eligible families participating in IMPACT, transitioning out of the TANF program, or are low income families at risk of becoming eligible for TANF.

Total Subsidized Child Care Payments

The total value of Child Care Development Fund (CCDF) Child Care Voucher Payments and CCDF Child Care Contract Payments.

Licensed Capacity of Child Care Homes

The number and licensed capacity of licensed day care homes.

Licensed Capacity of Child Care Centers

The number and licensed capacity of licensed day care centers.

Registered Ministries

The number of registered ministries with child caring facilities. The capacity of registered ministries is not regulated.

All data presented in this report was collected at the end of the reporting month.



Division of Family Resources
Monthly Management Report
Statewide
October 2006

State of Indiana
Family and Social Services Administration

Monthly Management Report
Definitions of Elements

Data Source Systems

CCDF – Prodnew

State and contractor developed database collecting child care services data.

FSSA Data Warehouse

A data coordinating entity established to

prepare federal TANF reports.

ICES

Indiana Client Eligibility System is a federally certified online, integrated, eligibility system that supports the administration of TANF, Food Stamps, IMPACT, and Medicaid Eligibility.

All data presented in this report was collected at the end of the reporting month.